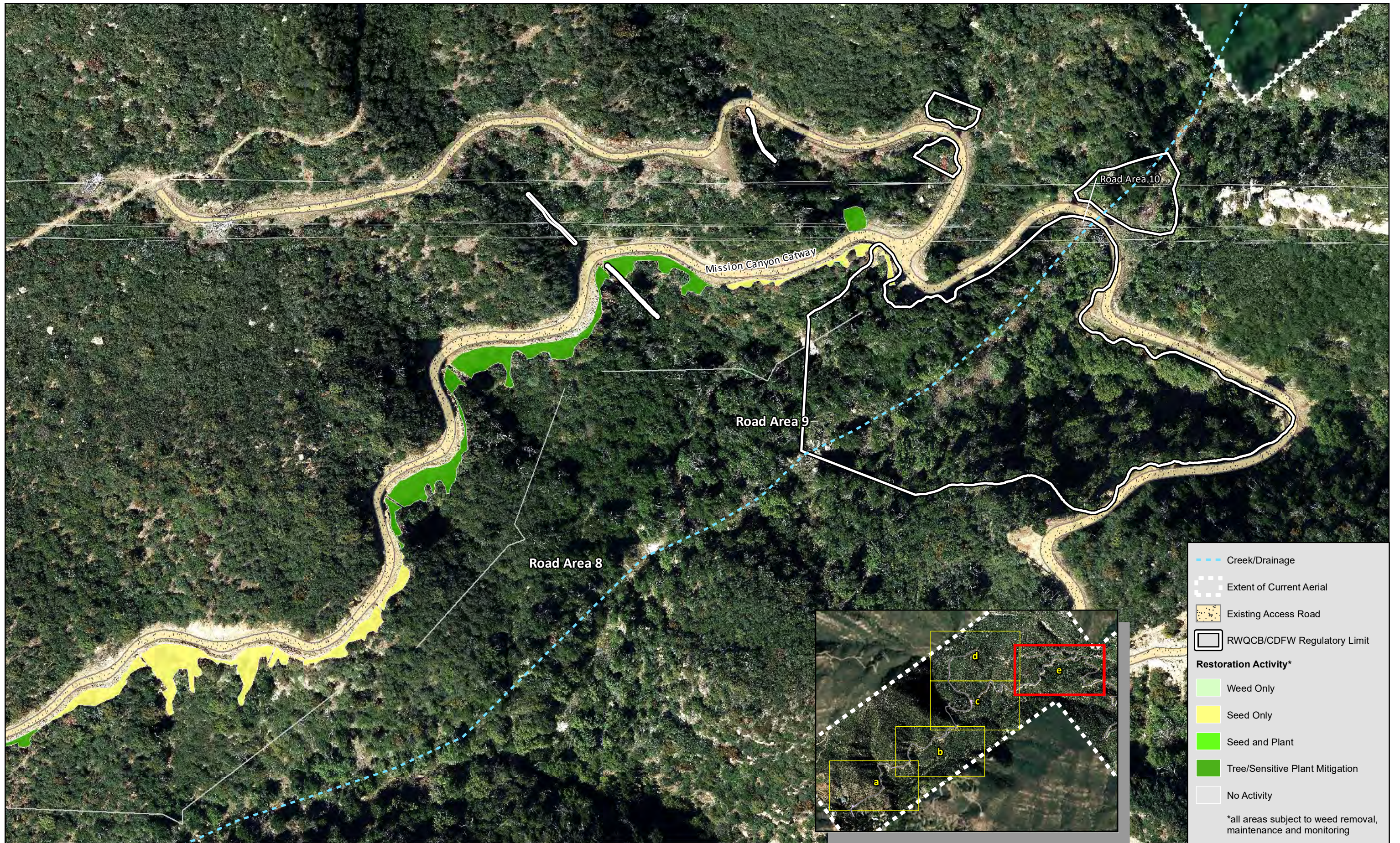


	Creek/Drainage
	Extent of Current Aerial
	Existing Access Road
	RWQCB/CDFW Regulatory Limit
	Contingency Buffer
Restoration Activity*	
	Weed Only
	Seed Only
	Seed and Plant
	Tree/Sensitive Plant Mitigation
	No Activity
*all areas subject to weed removal, maintenance and monitoring	



- - - - - Creek/Drainage
 - - - - - Extent of Current Aerial
 Existing Access Road
 RWQCB/CDFW Regulatory Limit
Restoration Activity*
 Weed Only
 Seed Only
 Seed and Plant
 Tree/Sensitive Plant Mitigation
 No Activity
 *all areas subject to weed removal, maintenance and monitoring

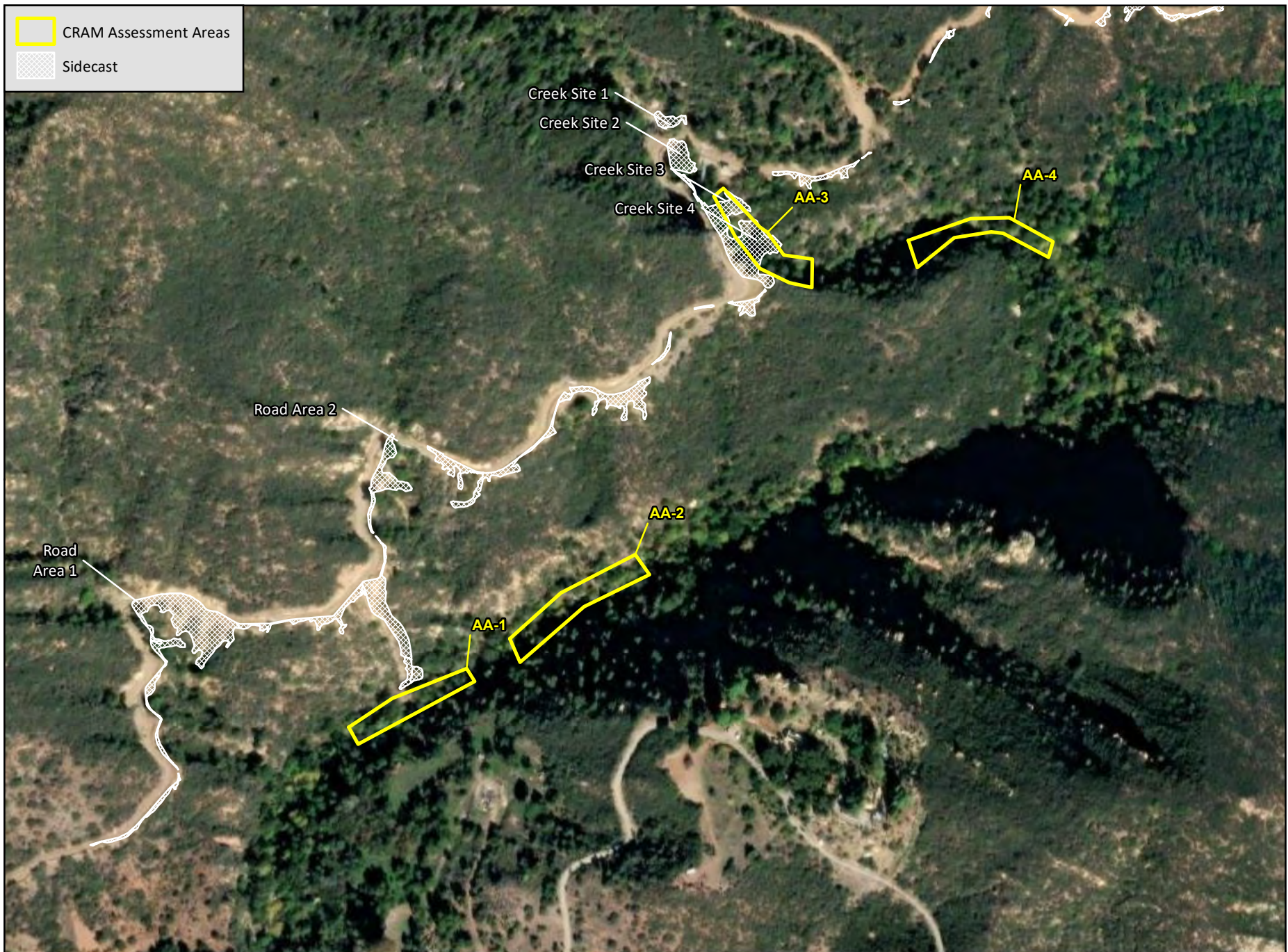


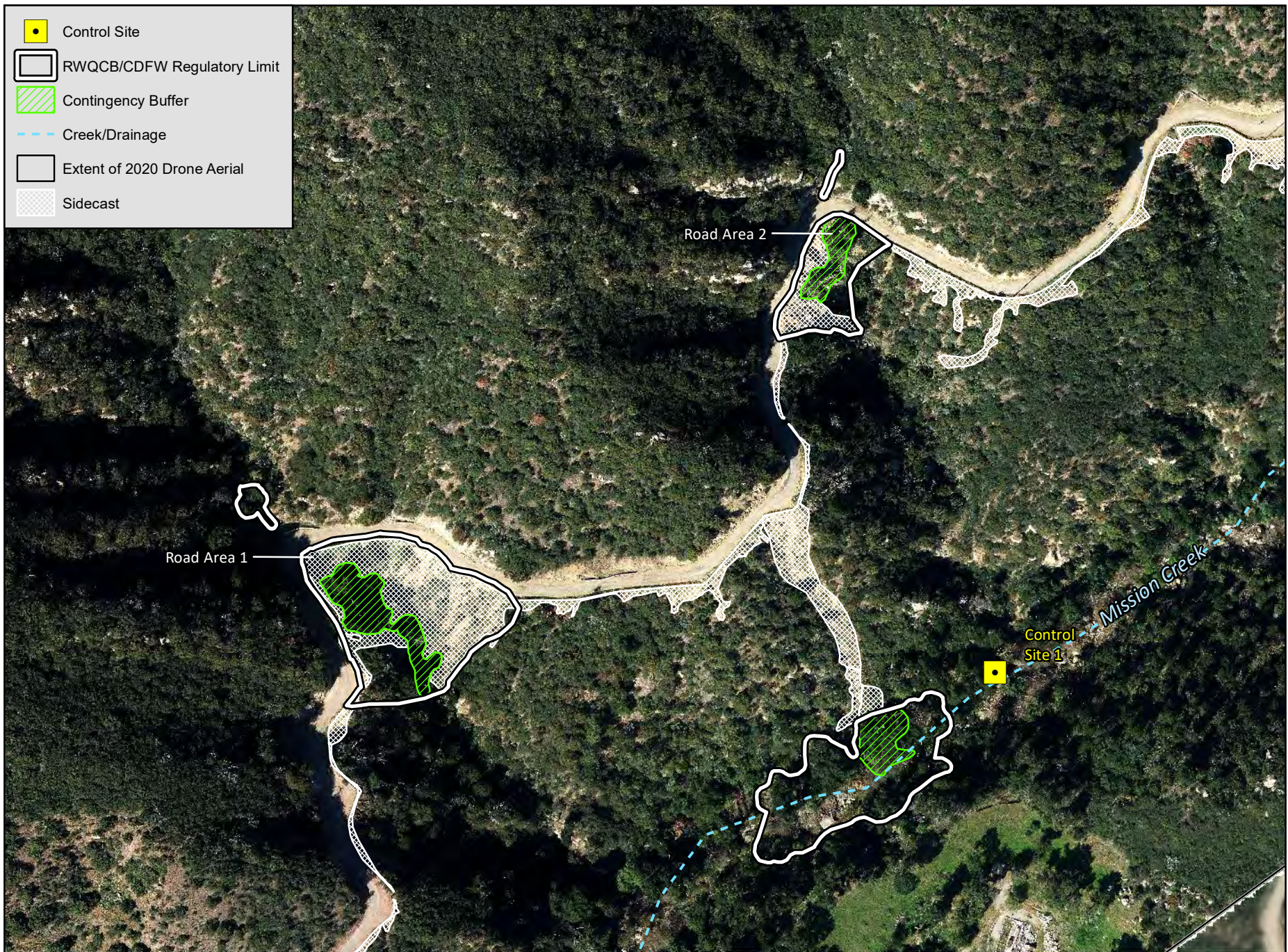
- - - Creek/Drainage
- Extent of Current Aerial
- Existing Access Road
- RWQCB/CDFW Regulatory Limit

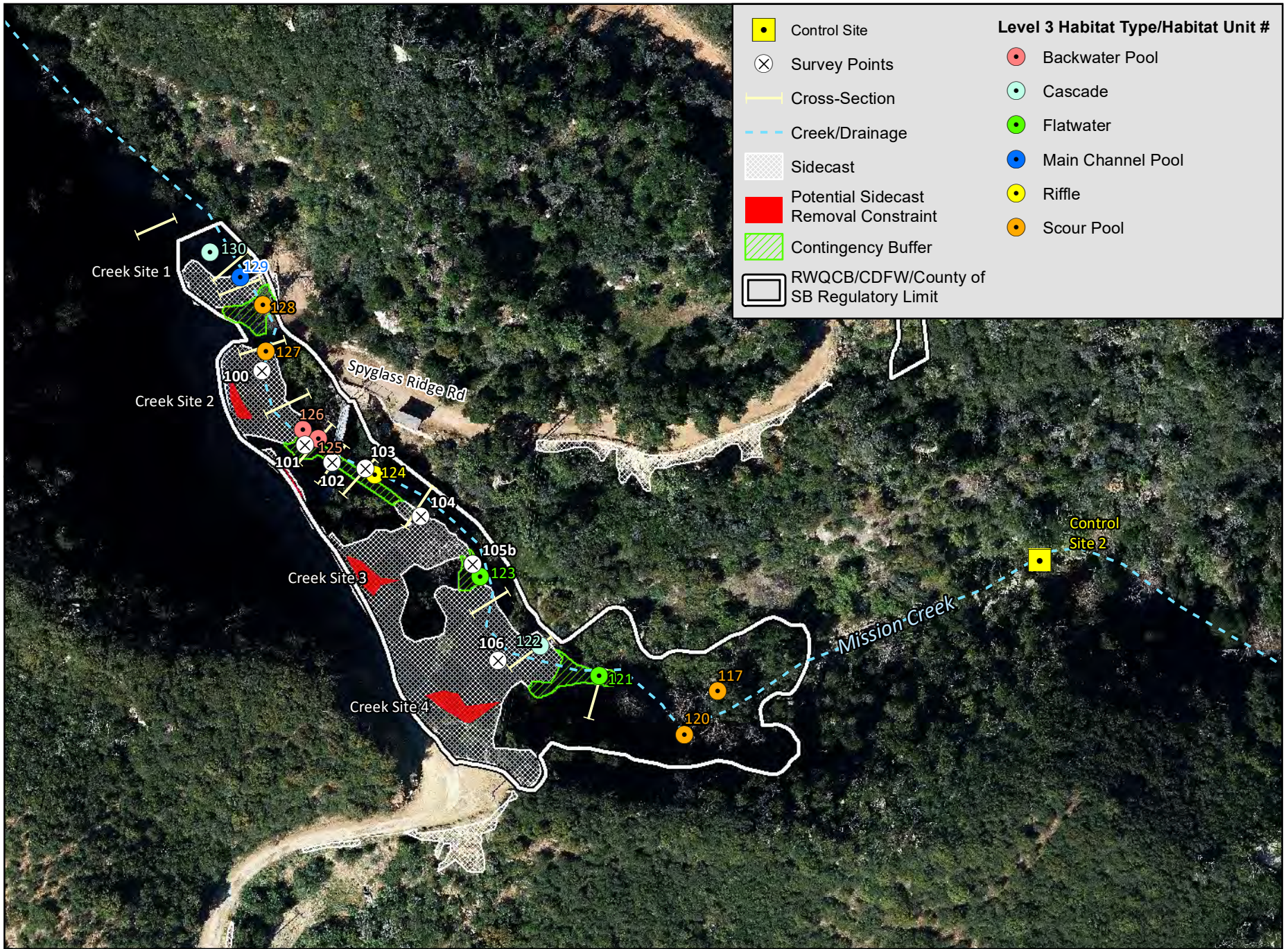
Restoration Activity*

- Weed Only
- Seed Only
- Seed and Plant
- Tree/Sensitive Plant Mitigation
- No Activity

*all areas subject to weed removal, maintenance and monitoring







Attachment A

Photographs of Mission Creek
Sidecast Areas



Photo 1. Example of sidecast in Mission Creek.



Photo 2. Looking upstream at Creek Site 2 in Mission Creek.

G:\PROJECTS\EDS-01\MissionCreek\Reports\Creek_HRP\WP\Creek Photos

Photographs of Mission Creek Sidecast Areas



Photo 3. Looking downstream in Mission Creek from Creek Site 2.



Photo 4. Looking downstream in Mission Creek at Creek Site 3.

G:\PROJECTS\EDS-01\MissionCreek\Reports\Creek_HRP\WP\Creek Photos

Photographs of Mission Creek Sidecast Areas



Photo 5. Looking upstream in Mission Creek at Creek Site 4.



Photo 6. Looking up from Mission Creek toward the road at Creek Site 4.

G:\PROJECTS\EDS-01\MissionCreek\Reports\Creek_HRP\WP\Creek Photos

Photographs of Mission Creek Sidecast Areas



Photo 7. View into Mission Creek from the road at Creek Site 4.



Photo 8. View into Mission Creek from the road at Creek Site 3.

G:\PROJECTS\EDS-01\MissionCreek\Reports\Creek_HRP\WP\Creek Photos

Photographs of Mission Creek Sidecast Areas



Photo 9. Erosion control matting and silt fence at Creek Site 2.



Photo 10. Erosion control matting and silt fence at Creek Site 1.

G:\PROJECTS\EDS-01\MissionCreek\Reports\Creek_HRP\WP\Creek Photos

Photographs of Mission Creek Sidecast Areas

Attachment B.1

Access Road Maintenance
Project- Tunnel Trail Area,
1/29/2020 and 1/31/2020

Preparer's Certification

Project Name:	Access Road Maintenance Project – Tunnel Trail Area	Prepared by:	Michael Baker International
Address:	Mission Creek and Spyglass Ridge Road, Santa Barbara, CA 93105	Prepared for:	Southern California Edison
Latitude/Longitude:	34.4698, -119.7074	Assessor's Parcel Number:	153-270-009

Engineer's Statement: Rock and sediment (sidecast material) from recent roadway grading and maintenance activities have been deposited in Mission Creek, which is located in Santa Barbara, California. This document provides planning-level estimates of the sidecast material volumes. These estimates are intended for planning purposes only and should not be used as the basis for design. All calculations are subject to revision.

Engineer: Patrick Kuga		PE Stamp Below 
Title	Project Manager	
Company	Michael Baker International	
Address	5 Hutton Centre Drive, Santa Ana, CA 92707	
Email	Patrick.Kuga@mbakerintl.com	
Telephone #	805.403.4824	
Signature		
Date	01/29/2020	

Sidecast Material Volume Estimate Summary

Mission Creek, Santa Barbara

Rock and sediment (sidecast material) from recent roadway grading and maintenance activities were deposited in Mission Creek, which is located in Santa Barbara, California. The material was sidecast from various points along an approximate 400-foot stretch of access road with elevations ranging from 20 to 50 feet above Mission Creek. The estimated volumes of sidecast material were calculated using post-construction Light Detection and Ranging (LiDAR) and survey data that was collected on January 14 and 15, 2020. **This document provides planning-level estimates of the sidecast material volumes and should not be used as the basis for design. All calculations are subject to revision.**

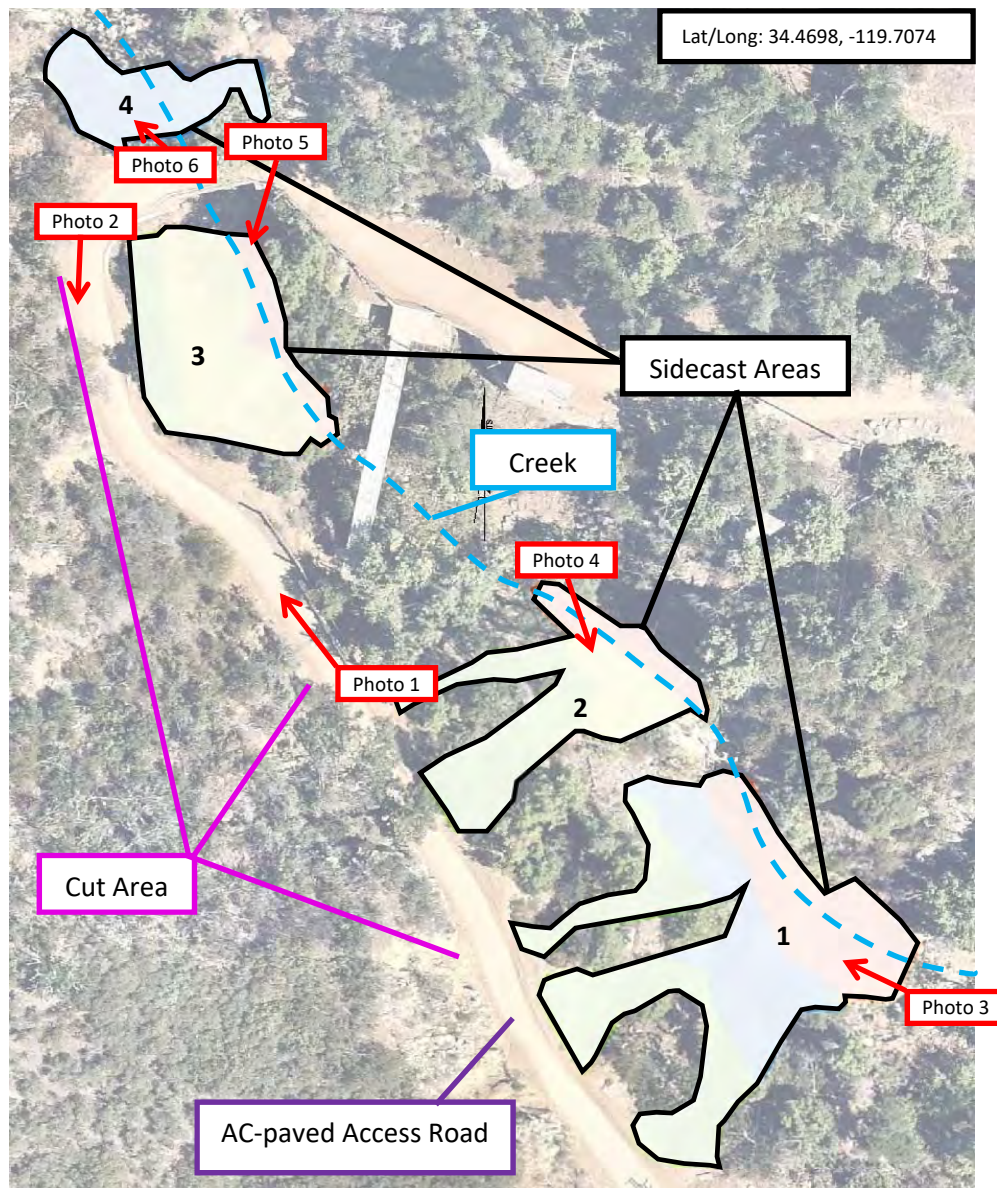


Figure 1: Site overview map showing access road, cut area, sidecast areas, creek, and photo locations.



Photo 1: Cut face, AC-paved road, looking northwest.



Photo 2: Cut face near bridge, looking southeast.



Photo 3: Sidecast Area 1.



Photo 4: Sidecast Area 2.



Photo 5: Sidecast Area 3.

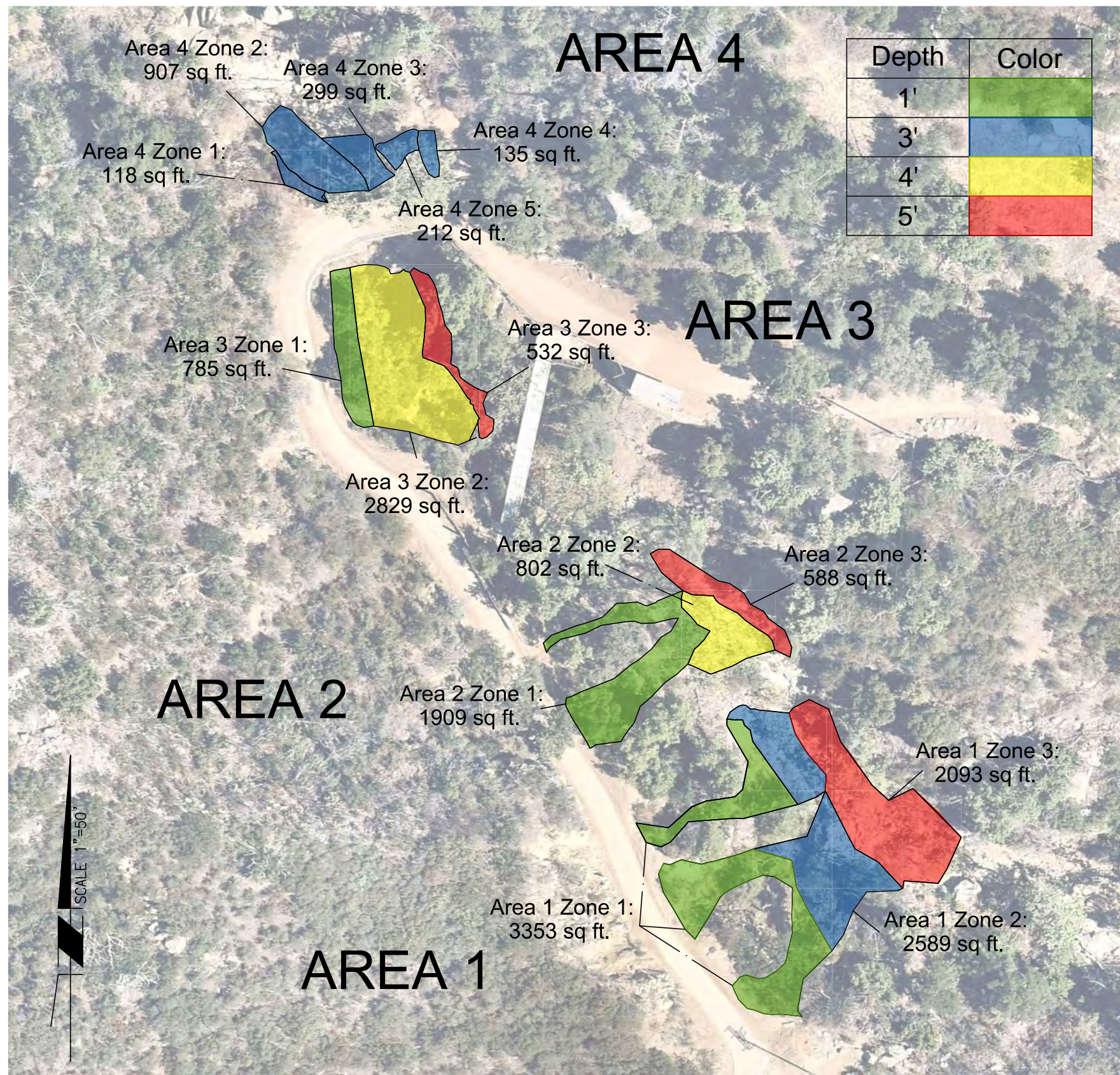


Photo 6: Sidecast Area 4.

Sidecast Area Volume Estimates

The estimated volumes for each location (Sidecast Areas 1-4) were developed using post-construction LiDAR and survey data that was collected on January 14 and 15, 2020. Three-dimensional surface areas were extracted from the survey data at each area. Since pre-construction survey data was not available to compare to post-construction surfaces, field observations were used to establish presumed average depths of sidecast deposits. The post-construction surface areas multiplied by the corresponding average depths of sidecast deposits produced volume estimates for each sidecast area, which are presented in the table below. A detailed summary of the estimated calculations is presented on the following page.

Sidecast Area	Estimated Volume of Sidecast Material
Area 1	800 yd ³
Area 2	299 yd ³
Area 3	547 yd ³
Area 4	186 yd ³
Total	1832 yd³



Area 1			
Zone	3D Surface Area	Estimated Depth	Volume
1	3353 SQFT	1'	124 yd ³
2	2589 SQFT	3'	288 yd ³
3	2093 SQFT	5'	388 yd ³
	8035 SQFT	Total	800 yd³

Area 2			
Zone	3D Surface Area	Estimated Depth	Volume
1	1909 SQFT	1'	71 yd ³
2	802 SQFT	4'	119 yd ³
3	588 SQFT	5'	109 yd ³
	3299 SQFT	Total	299 yd³

Area 3			
Zone	3D Surface Area	Estimated Depth	Volume
1	785 SQFT	1'	29 yd ³
2	2829 SQFT	4'	419 yd ³
3	532 SQFT	5'	99 yd ³
	4146 SQFT	Total	547 yd³

Area 4			
Zone	3D Surface Area	Estimated Depth	Volume
1	118 SQFT	3'	13 yd ³
2	907 SQFT	3'	101 yd ³
3	299 SQFT	3'	33 yd ³
4	135 SQFT	3'	15 yd ³
5	212 SQFT	3'	24 yd ³
	1671 SQFT	Total	186 yd³

Totals Based on 3D Surface Area & Depth

A1	800 yd ³
A2	299 yd ³
A3	547 yd ³
A4	186 yd ³
Total	1832 yd³

PREPARED FOR: SCE		SURVEY PARTY CHIEF REVIEW:				 5 Hutton Centre Drive Suite 500 Santa Ana, CA 92707 Phone: (949) 472-3505 MBAKERINTL.COM	SHEET 1 OF 1		
PROJECT SITE: MISSION CREEK SANTA BARBARA		SIDECAST AREAS		SURVEY DATE				PLOT DATE	1/28/2020
				DRAWN BY	RBATAC			SCALE	1"=50'
				JOB NO.	176642			NOTEBOOK	10104971

Preparer's Certification

Project Name:	Access Road Maintenance Project – Tunnel Trail Area	Prepared by:	Michael Baker International
Address:	Spyglass Ridge Road, Santa Barbara, CA 93105	Prepared for:	Southern California Edison
Latitude/Longitude:	34.4677, -119.7096 (Area 5) 34.4667, -119.7112 (Area 6)	Assessor's Parcel Number:	153-270-009

Engineer's Statement: Rock and sediment (sidecast material) from recent roadway grading and maintenance activities have been deposited into unnamed canyons along Spyglass Ridge Road, which is located in Santa Barbara, California. This document provides planning-level estimates of the sidecast material volumes that were determined using post-grading LiDAR data and assumptions of pre-grading average cross sectional geometry in the drainages due to the absence of pre-grading topography.

Engineer: Patrick Kuga		PE Stamp Below 
Title	Project Manager	
Company	Michael Baker International	
Address	5 Hutton Centre Drive, Santa Ana, CA 92707	
Email	Patrick.Kuga@mbakerintl.com	
Telephone #	805.403.4824	
Signature		
Date	01/31/2020	

Sidecast Material Volume Estimate Summary

Spyglass Ridge Road, Santa Barbara

Rock and sediment (sidecast material) from recent roadway grading and maintenance activities were deposited in steep canyons along Spyglass Ridge Road, which is located in Santa Barbara, California. The material was sidecast into steep canyons at two points along the AC-paved access road. The estimated volumes of sidecast material were calculated using post-construction Light Detection and Ranging (LiDAR), survey data, and assumptions of pre-grading average cross sectional geometry in the canyons due to the absence of pre-grading topography. The LiDAR and survey data were collected on January 14 and 15, 2020. **This document provides planning-level estimates of the sidecast material volumes.**

For sidecast volume estimates in Mission Creek (Areas 1-4), see “Mission Creek – Sidecast Volume Estimate Summary” document.

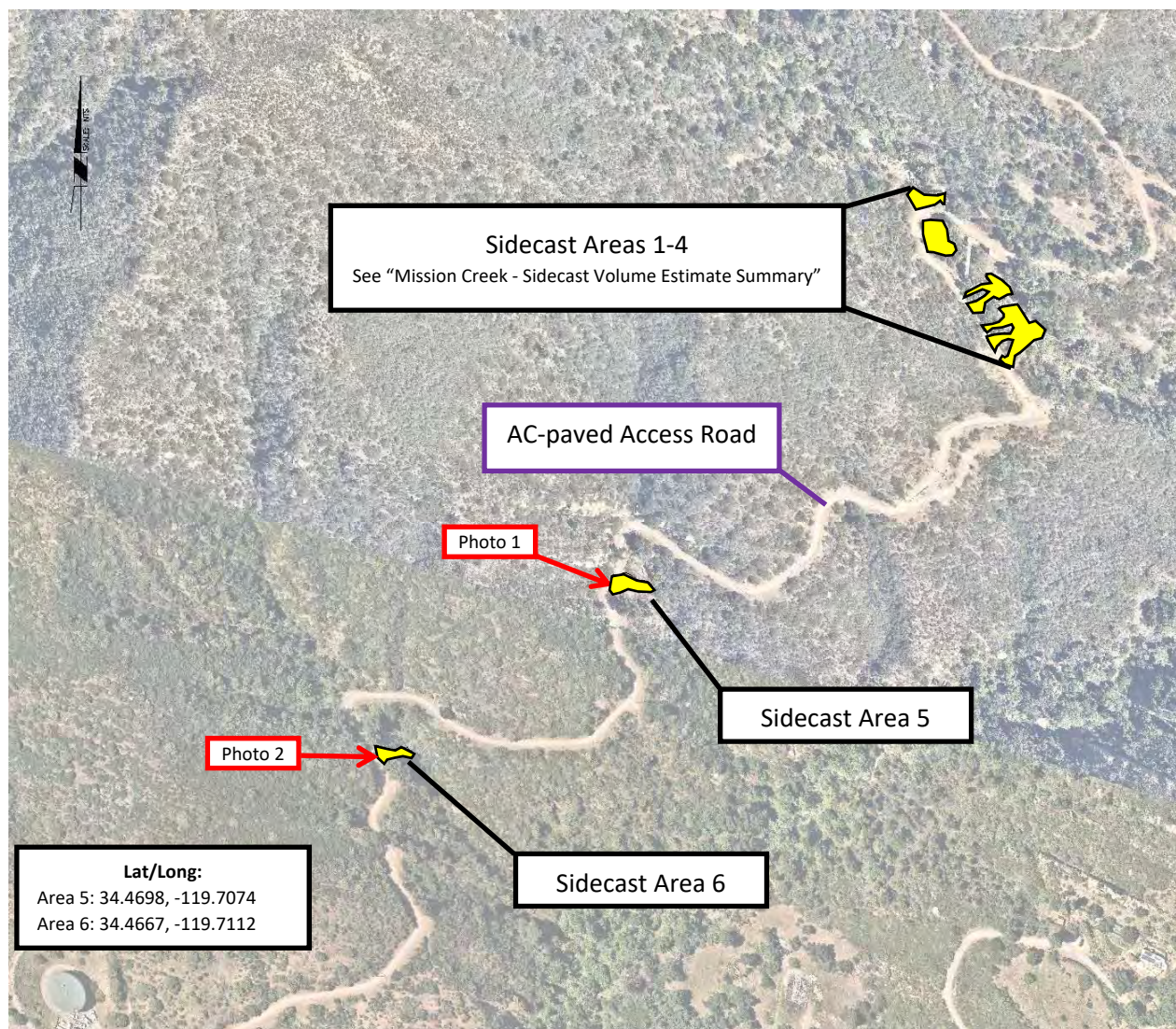


Figure 1: Site overview map showing access road, sidecast areas, and photo locations.



Photo 1: Sidecast Area 5.



Photo 2: Sidecast Area 6.

Sidecast Area Volume Estimates

The estimated volumes for the two roadside sidecast locations (Sidecast Areas 5-6) were developed using post-construction LiDAR and survey data that was collected on January 14 and 15, 2020. Three-dimensional surface areas were extracted from the survey data at each area. Since pre-construction survey data was not available to compare to post-construction surfaces, field observations were used to establish presumed average depths of sidecast deposits. The post-construction surface areas multiplied by the corresponding average depths of sidecast deposits produced volume, which are presented in the table below. A detailed summary of the estimated calculations is presented on the following page.

Sidecast Area	Estimated Volume of Sidecast Material
Area 5	127 yd ³
Area 6	76 yd ³
Total	203 yd³



Depth	Color
1'	
2'	

Area 5			
Zone	3D Surface Area	Estimated Depth	Volume
1	2234 SQFT	1'	83 yd ³
2	596 SQFT	2'	44 yd ³
	2830 SQFT	Total	127 yd³
Area 6			
Zone	3D Surface Area	Estimated Depth	Volume
1	1342 SQFT	1'	50 yd ³
2	345 SQFT	2'	26 yd ³
	1687 SQFT	Total	76 yd³

Totals Based on 3D Surface Area & Depth

A5	127 yd ³
A6	76 yd ³
Total	203 yd³

PREPARED FOR:

SCE

SURVEY PARTY CHIEF REVIEW:

SURVEY DATE		PLOT DATE	1/31/2020
DRAWN BY	RBATAC	SCALE	1"=70'
JOB NO.	176642	NOTEBOOK	10104971

PROJECT SITE: MISSION CREEK
SANTA BARBARA

SIDECAST AREAS

Michael Baker
INTERNATIONAL

5 Hutton Centre Drive
Suite 500
Santa Ana, CA 92707
Phone: (949) 472-3505
MBAKERINTL.COM

SHEET

1 OF **1**

Attachment B.2

Sidecast Material – Volume Estimate,
Mission Creek Access Road,
5/7/2020

Sidecast Material - Volume Estimate

Mission Creek Access Road

Location Spyglass Ridge Road and Mission Canyon Catway
Mission Canyon, Santa Barbara, California

Post Construction Condition

Rock and sediment (sidecast material) from recent roadway grading and maintenance activities have been deposited on slopes and into Mission Creek and unnamed tributaries along Spyglass Ridge Road and Mission Canyon Catway. The following tables and exhibits present estimated volumes of this sidecast material.

Discussion and Methodology

This document provides planning-level estimates of sidecast material volumes. Material volumes were estimated using post-grading aerial imagery, Light Detection and Ranging (LiDAR), and survey data. The data were collected between January and April of 2020.

Two-dimensional surface areas were extracted from the collected data. Pre-construction topography was not available to compare to post-construction surfaces, so field investigations and site photos were used to estimate local depths of sidecast deposits. Volume estimates of sidecasting material were calculated by multiplying surface areas by corresponding estimated depths (Surface Area x Depth = Volume).

- **Attachment A** contains a volume calculation summary table
- **Attachment B** contains exhibits for volume estimates, highlighting
 - Total volume of deposited material
 - Volume of material within RWQCB/CDFW/USACE jurisdiction
 - Volume of material within RWQCB/CDFW jurisdiction
 - Upland volume of material (volume outside of RWQCB/CDFW/USACE jurisdiction)

Attachment A
Volume Calculation Summary Table

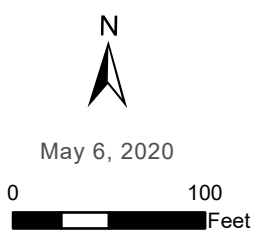
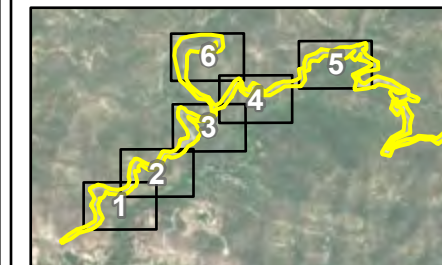
Attachment A

Volume Calculation Summary Table

Site Location	Surface Area (sqft)	Estimated Depth¹ (ft)	Total Sidecast Volume (yd³)	Volume within RWQCB/CDFW/USACE (yd³)	Volume within RWQCB/CDFW (yd³)	Upland Sidecasting (yd³)
Creek Site 1	1447.6	<i>Variable</i>	160.8	27.7	141.9	18.9
Creek Site 2	3598.5	<i>Variable</i>	471.0	65.0	468.0	3.0
Creek Site 3	4299.8	<i>Variable</i>	319.0	53.4	318.6	0.4
Creek Site 4	10303.5	<i>Variable</i>	857.5	213.5	856.7	0.8
Creek Site 5	0.0	<i>Variable</i>	0.0	0.0	0.0	0.0
Creek Site 6	0.0	<i>Variable</i>	0.0	0.0	0.0	0.0
Creek Site 7	6543.1	<i>Variable</i>	12.5	3.5	3.5	9.0
Road Area 1	17029.3	<i>Variable</i>	642.6	3.5	636.6	6.0
Road Area 2	4525.6	<i>Variable</i>	188.1	0.0	158.1	30.1
SC 1	1315.2	<i>1</i>	48.7	0.0	0.0	48.7
SC 2	4439.4	<i>1</i>	164.4	0.0	0.0	164.4
SC 3	6885.2	<i>1</i>	255.0	0.0	0.0	255.0
SC 4	4581.4	<i>1</i>	169.7	0.0	0.0	169.7
SC 5	6303.5	<i>1</i>	233.5	0.0	0.0	233.5
SC 6	1223.9	<i>1</i>	45.3	0.0	0.0	45.3
SC 7	2112.8	<i>1</i>	78.3	0.0	0.0	78.3
SC 8	141.7	<i>1</i>	5.2	0.0	0.0	5.2
SC 9	414.7	<i>1</i>	15.4	0.0	0.0	15.4
SC 10	2036.1	<i>1</i>	75.4	0.0	0.0	75.4
SC 11	4891.5	<i>1</i>	181.2	0.0	0.0	181.2
SC 12	7424.7	<i>1</i>	275.0	0.0	0.0	275.0
SC 13	2809.0	<i>1</i>	104.0	0.0	0.0	104.0
SC 14	5921.6	<i>1</i>	219.3	0.0	0.0	219.3
SC 15	353.6	<i>1</i>	13.1	0.0	0.0	13.1
SC 16	911.5	<i>1</i>	33.8	0.0	0.0	33.8
SC 17	474.4	<i>1</i>	17.6	0.0	0.0	17.6
SC 18	2738.2	<i>1</i>	101.4	0.0	0.0	101.4
SC 19	2446.2	<i>1</i>	90.6	0.0	0.0	90.6
Total	105172.0	-	4778.4	366.6	2583.3	2195.1

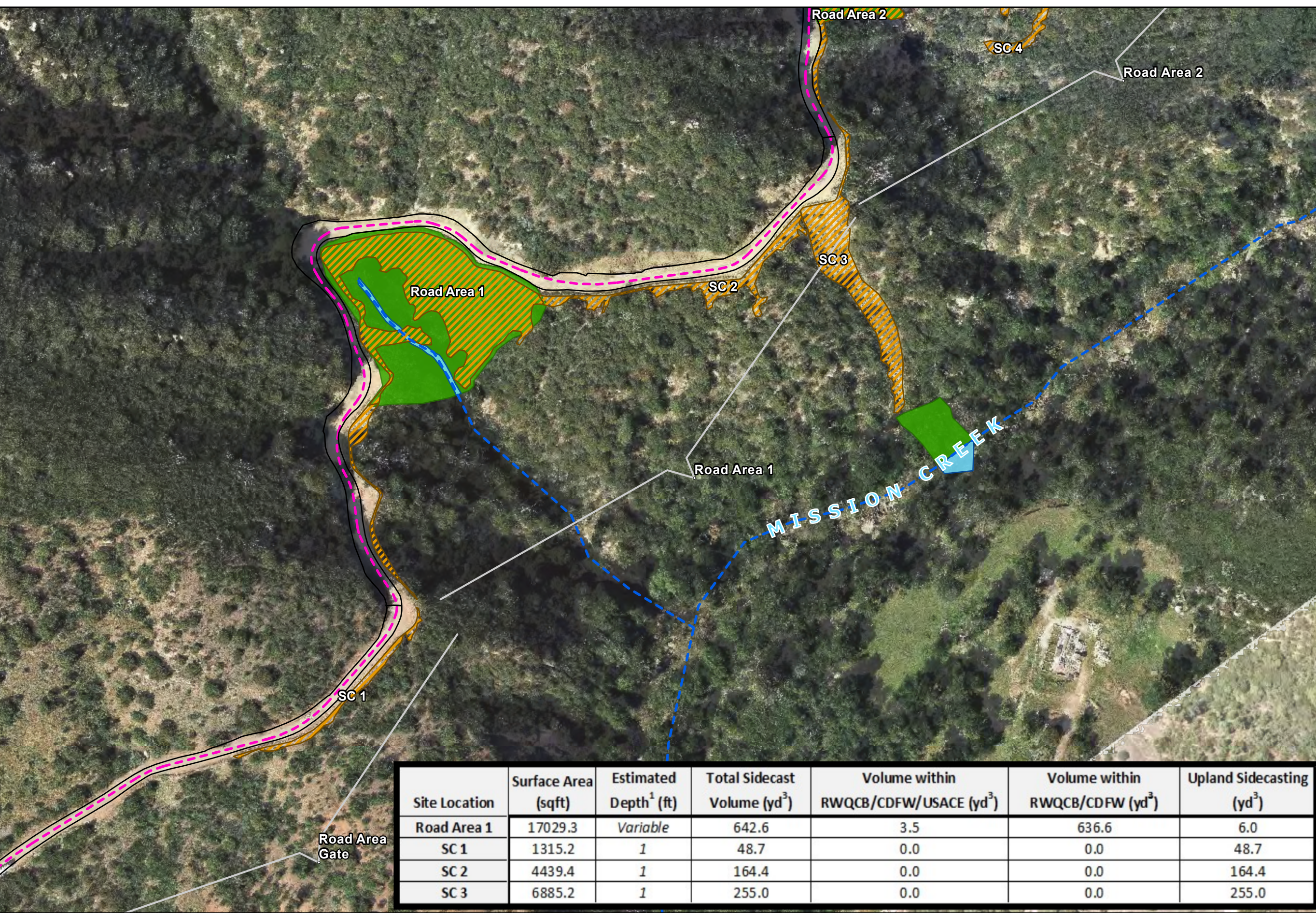
Attachment B
Sidecast Volume Estimate Exhibit Table

- Legend**
- Jesusita Trail
 - Mission Creek Tributaries
 - Asphalt Road
 - USACE/CDFW/RWQCB
 - CDFW/RWQCB
 - Sidecast Areas



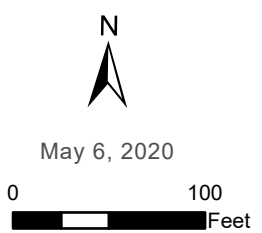
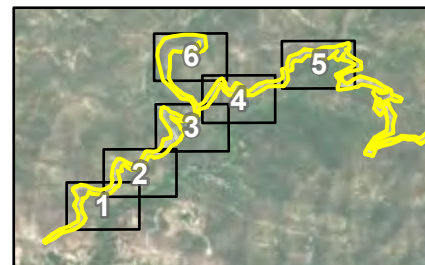
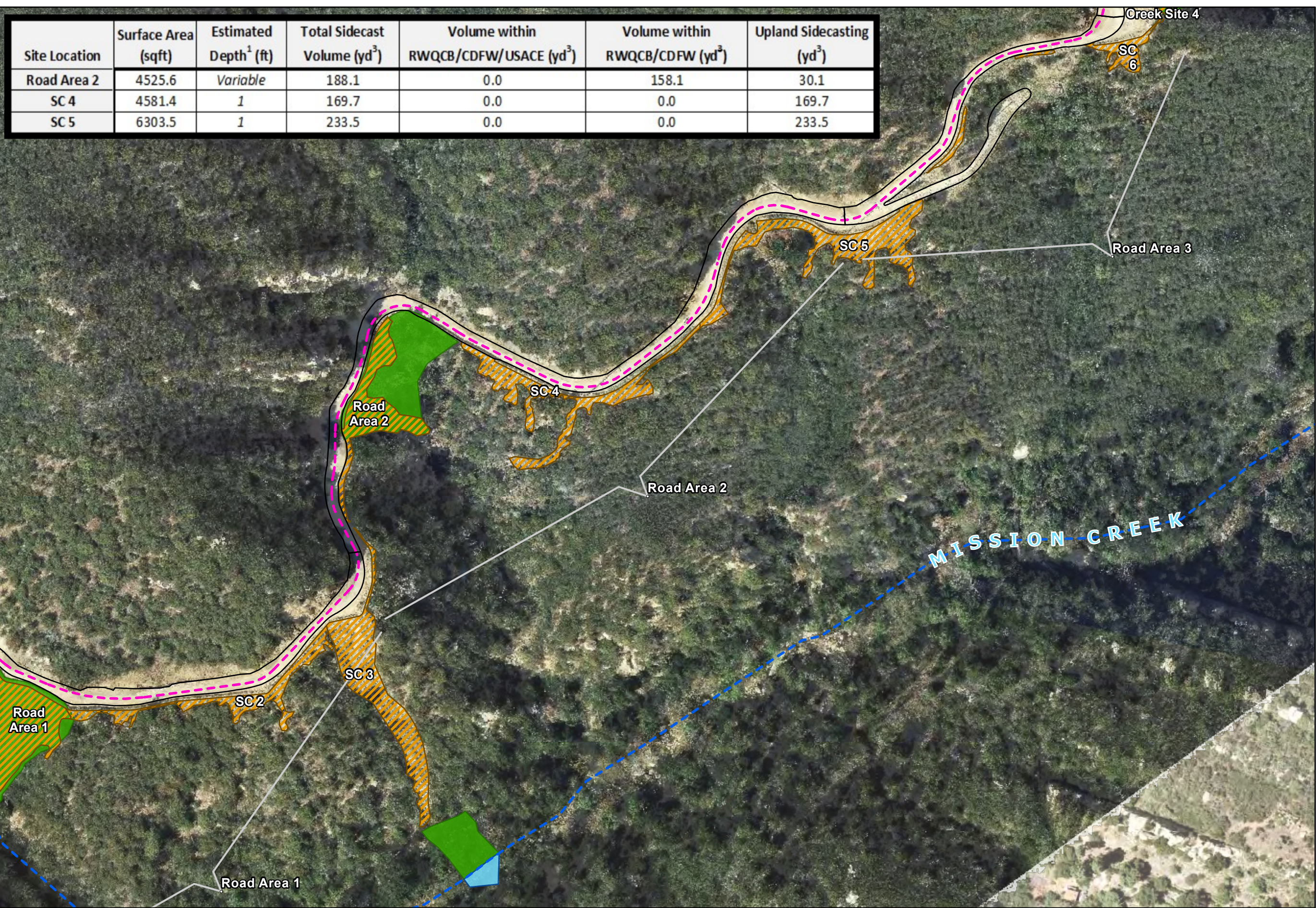
Site Location	Surface Area (sqft)	Estimated Depth ¹ (ft)	Total Sidecast Volume (yd ³)	Volume within RWQCB/CDFW/USACE (yd ³)	Volume within RWQCB/CDFW (yd ³)	Upland Sidecasting (yd ³)
Road Area 1	17029.3	Variable	642.6	3.5	636.6	6.0
SC 1	1315.2	1	48.7	0.0	0.0	48.7
SC 2	4439.4	1	164.4	0.0	0.0	164.4
SC 3	6885.2	1	255.0	0.0	0.0	255.0

Source: Rincon, 2020



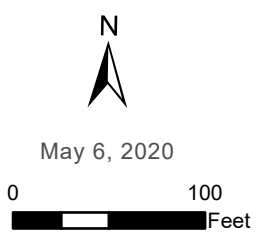
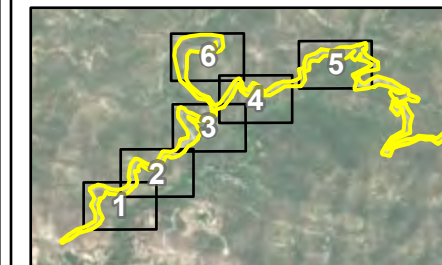
Site Location	Surface Area (sqft)	Estimated Depth ¹ (ft)	Total Sidecast Volume (yd ³)	Volume within RWQCB/CDFW/USACE (yd ³)	Volume within RWQCB/CDFW (yd ³)	Upland Sidecasting (yd ³)
Road Area 2	4525.6	Variable	188.1	0.0	158.1	30.1
SC 4	4581.4	1	169.7	0.0	0.0	169.7
SC 5	6303.5	1	233.5	0.0	0.0	233.5

- Legend
- - - Jesusita Trail
 - - - Mission Creek Tributaries
 - Asphalt Road
 - USACE/CDFW/RWQCB
 - CDFW/RWQCB
 - Sidecast Areas

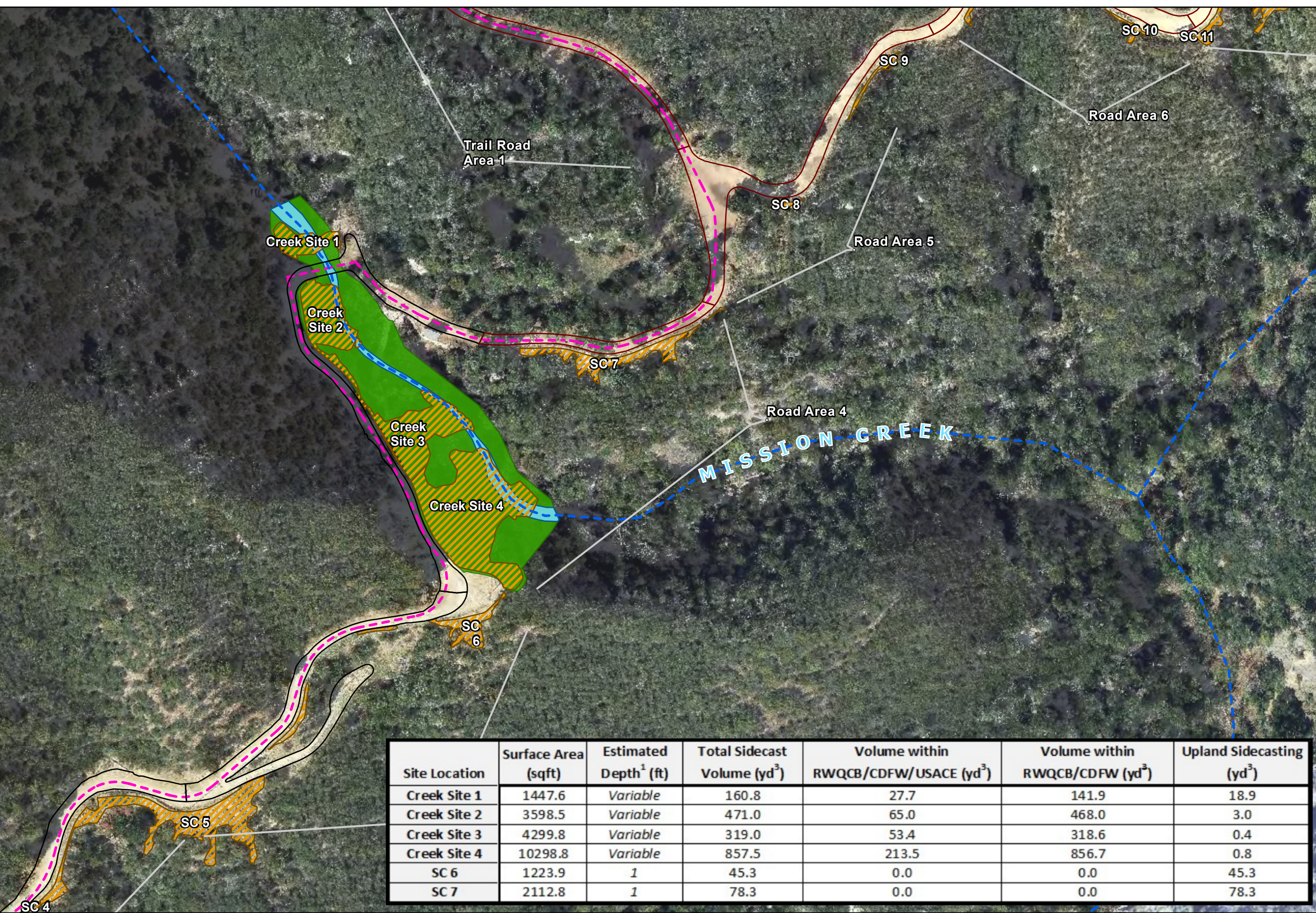


Source: Rincon, 2020

- Legend**
- Jesusita Trail
 - Mission Creek Tributaries
 - Dirt Road
 - Asphalt Road
 - USACE/CDFW/RWQCB
 - CDFW/RWQCB
 - Sidecast Areas

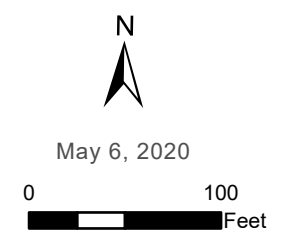
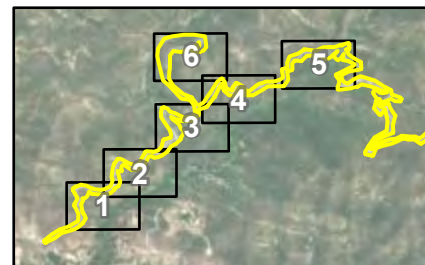


Site Location	Surface Area (sqft)	Estimated Depth ¹ (ft)	Total Sidecast Volume (yd ³)	Volume within RWQCB/CDFW/USACE (yd ³)	Volume within RWQCB/CDFW (yd ³)	Upland Sidecasting (yd ³)
Creek Site 1	1447.6	Variable	160.8	27.7	141.9	18.9
Creek Site 2	3598.5	Variable	471.0	65.0	468.0	3.0
Creek Site 3	4299.8	Variable	319.0	53.4	318.6	0.4
Creek Site 4	10298.8	Variable	857.5	213.5	856.7	0.8
SC 6	1223.9	1	45.3	0.0	0.0	45.3
SC 7	2112.8	1	78.3	0.0	0.0	78.3



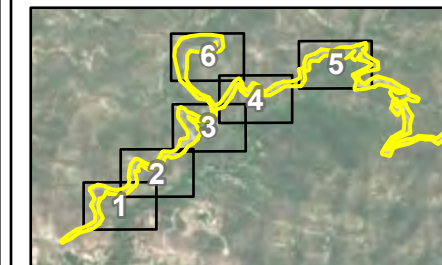
Site Location	Surface Area (sqft)	Estimated Depth ¹ (ft)	Total Sidecast Volume (yd ³)	Volume within RWQCB/CDFW/USACE (yd ³)	Volume within RWQCB/CDFW (yd ³)	Upland Sidecasting (yd ³)
SC 8	141.7	1	5.2	0.0	0.0	5.2
SC 9	414.7	1	15.4	0.0	0.0	15.4
SC 10	2036.1	1	75.4	0.0	0.0	75.4
SC 11	4891.5	1	181.2	0.0	0.0	181.2
SC 12	7424.7	1	275.0	0.0	0.0	275.0

- Legend
- Jesusita Trail
 - Mission Creek Tributaries
 - Dirt Road
 - Sidecast Areas



Source: Rincon, 2020

- Legend**
-  Mission Creek Tributaries
 -  Dirt Road
 -  USACE/CDFW/RWQCB
 -  CDFW/RWQCB
 -  Sidecast Areas

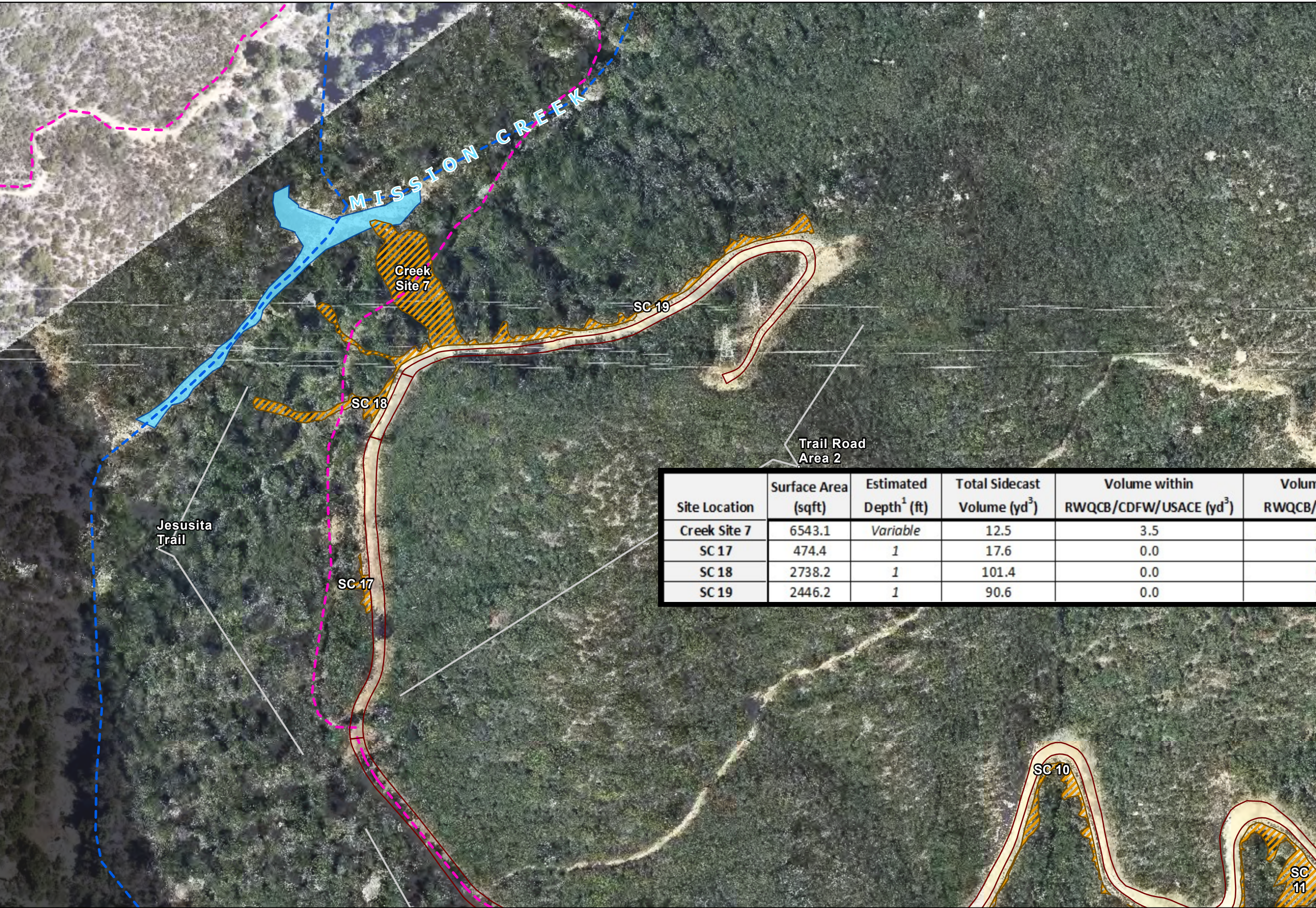


May 6, 2020
 0 100
 Feet

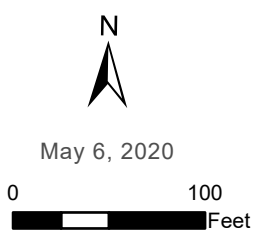
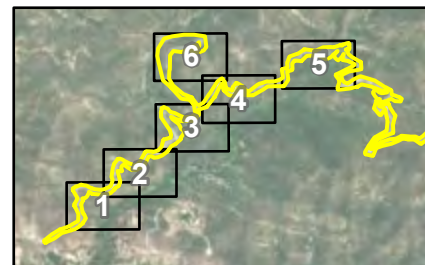
Source: Rincon, 2020

Site Location	Surface Area (sqft)	Estimated Depth ¹ (ft)	Total Sidecast Volume (yd ³)	Volume within RWQCB/CDFW/USACE (yd ³)	Volume within RWQCB/CDFW (yd ³)	Upland Sidecasting (yd ³)
SC 13	2809.0	1	104.0	0.0	0.0	104.0
SC 14	5921.6	1	219.3	0.0	0.0	219.3
SC 15	353.6	1	13.1	0.0	0.0	13.1
SC 16	911.5	1	33.8	0.0	0.0	33.8

- Legend**
- Jesusita Trail
 - Mission Creek Tributaries
 - Dirt Road
 - USACE/CDFW/RWQCB
 - Sidecast Areas



Site Location	Surface Area (sqft)	Estimated Depth ¹ (ft)	Total Sidecast Volume (yd ³)	Volume within RWQCB/CDFW/USACE (yd ³)	Volume within RWQCB/CDFW (yd ³)	Upland Sidecasting (yd ³)
Creek Site 7	6543.1	Variable	12.5	3.5	3.5	9.0
SC 17	474.4	1	17.6	0.0	0.0	17.6
SC 18	2738.2	1	101.4	0.0	0.0	101.4
SC 19	2446.2	1	90.6	0.0	0.0	90.6



Source: Rincon, 2020

Attachment C

Photographs of Mission Creek and
the Project Area Following January
2023 Rainstorm Event



January 2023



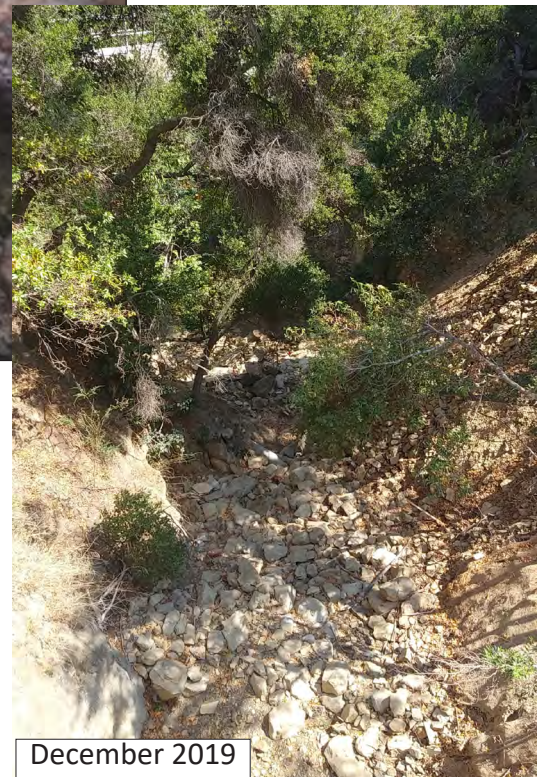
December 2019

Photograph 1a-b. Creek Site 2, Mission Creek plunge Pool below bridge.

G:\PROJECTS\ISO\CalEdison_01606\EDS-01.EDS-01\MissionCreek\Reports\Creek_HRP\Attachment C. Storm Photos



January 2023



December 2019

Photograph 2a-b. Creek Sites 2 and 3 Mission Creek pool and riffle habitat below bridge.

G:\PROJECTS\SoCal\Edison_01606\EDS-01\EDS-01_10_MissionCreek\Reports\Creek_HRP\Attachment C_ Storm Photos



Photograph 3. Spyglass Ridge Road Area 1 with slope failure, looking north.

G:\PROJECTS\SoCalEdison_01600\EDS-01_10_MissionCreek\Reports\Creek_HRP\Attachment C Storm Photos



January 2023



December 2019

Photograph 4a-b. Spyglass Ridge Road Area 1 slope failure, looking south.

G:\PROJECTS\150CalEdison_01606\EDS-01.EDS-01\EDS-01.10.MissionCreek\Reports\Creek_HRP\Attachment C. Storm Photos



Photograph 5. Spyglass Ridge Road Area 2 with slope failure, looking south.

G:\PROJECTS\SoCalEdison_01600\EDS-01_10_MissionCreek\Reports\Creek_HRP\Attachment C Storm Photos

Attachment D

Compensatory Mitigation Plan
(to be provided)

Attachment E1

Trees Remediated in November 2020

Attachment E.1. Trees Remediated in November 2020

TREE ID No.	Species	DBH (in.)	Dripline (feet)	Estimated Height (Feet)	Impact Severity	Impact Type				Remedial Measure				Location	
						Undetermined Source	Mechanical Damage	Rocks and Boulders Damage	Soil Impacts	Leave as Snag	Prune	Trim/Cover Roots	Remove Rock/Soil	Lat	Long
1	coast live oak	18	12	25	Minor Damage			1	1				1	-119.7110568	34.46592359
2	coast live oak	14	10	14	Minor Damage				1				1	-119.7110533	34.46594928
3	coast live oak	16	8	15	Minor Damage			1	1		1		1	-119.7110336	34.46605019
4	coast live oak	12	9	25	Minor Damage			1	1				1	-119.7111501	34.46626174
5	coast live oak	19	15	20	Minor Damage			1	1				1	-119.7111683	34.46626377
6	coast live oak	14	9	18	Minor Damage				1				1	-119.711248	34.46625645
8	coast live oak	14	10	25	Minor Damage			1	1				1	-119.7111877	34.46669838
9	coast live oak	26	20	35	Moderate Damage		1		1		1		1	-119.7112266	34.46669806
10	coast live oak	13	15	18	Minor Damage			1	1				1	-119.711227	34.46675077
11	coast live oak	48	25	35	Minor Damage		1	1	1		1		1	-119.7113454	34.46678256
12	coast live oak	12	25	25	Minor Damage		1							-119.7114107	34.46684186
13	coast live oak	6	5	12	Minor Damage		1	1	1				1	-119.7103201	34.4668083
14	coast live oak	28	10	30	Moderate Damage		1	1	1		1		1	-119.7094044	34.46711998
15	coast live oak	28	20	30	Minor Damage		1	1	1				1	-119.7095515	34.46732541
16	coast live oak	24	25	50	Minor Damage				1				1	-119.7096008	34.46762396
17	bay laurel	20	12	40	Major Damage		1	1	1		1		1	-119.7094175	34.46794856
18	bay laurel	18	0	0	Major Damage		1	1		1	1			-119.709414	34.46794302
19	bay laurel	16	8	15	Major Damage		1	1	1	1			1	-119.7094104	34.46792991
20	bay laurel	30	15	40	Moderate Damage		1	1					1	-119.7094144	34.46796626
21	coast live oak	26	25	40	Minor Damage				1				1	-119.7079788	34.46822197
23	coast live oak	19	15	35	Minor Damage				1				1	-119.7057805	34.47011591
24	coast live oak	16	8	25	Minor Damage				1				1	-119.7058393	34.47010991
25	coast live oak	11	9	20	Minor Damage			1	1				1	-119.7058723	34.47014837
26	coast live oak	13	10	25	Minor Damage		1	1	1	1			1	-119.7058736	34.47009979
27	coast live oak	17	8	25	Minor Damage			1	1				1	-119.7058472	34.47009575
28	coast live oak	23	6	12	Minor Damage			1	1				1	-119.7058605	34.47003565
29	coast live oak	7	2	6	Minor Damage				1				1	-119.7059291	34.46979865
30	coast live oak	4	1	7	Moderate Damage	1	1				1	1		-119.7060293	34.46982087
31	coast live oak	30	6	25	Minor Damage			1	1				1	-119.7059994	34.46976253
32	coast live oak	28	20	40	Minor Damage		1		1		1		1	-119.7060346	34.46972712
33	coast live oak	8	3	12	Minor Damage	1	1					1		-119.706071	34.46977838
34	Other	12	9	25	Moderate Damage	1	1					1		-119.7060806	34.46976624
35	coast live oak	19	9	35	Minor Damage			1	1				1	-119.7062752	34.46960789
36	coast live oak	20	18	25	Moderate Damage	1	1					1		-119.7062381	34.46968009
37	coast live oak	22	30	40	Moderate Damage	1	1					1		-119.7063747	34.46967334
38	coast live oak	16	25	30	Moderate Damage	1	1					1		-119.7064342	34.46968417
39	coast live oak	8	8	25	Minor Damage		1	1				1		-119.7064972	34.46967904
40	coast live oak	16	20	25	Minor Damage		1					1		-119.7065787	34.46968228
41	coast live oak	8	20	20	Minor Damage	1						1		-119.706626	34.46967107
42	coast live oak	18	2	8	Major Damage		1				1			-119.7067228	34.46969603
43	coast live oak	23	20	25	Minor Damage				1				1	-119.7067748	34.4696473
44	coast live oak	50	20	25	Minor Damage	1					1			-119.7071286	34.46994525
68	coast live oak	17	5	20	Minor Damage			1	1				1	-119.7056682	34.47009146
69	coast live oak	26	8	9	Moderate Damage		1	1	1		1		1	-119.7056496	34.47014391
70	coast live oak	4	2	8	Moderate Damage		1		1		1		1	-119.7055726	34.47018776
71	coast live oak	36	8	25	Major Damage		1		1		1		1	-119.7055197	34.47032528
72	coast live oak	18	8	25	Minor Damage				1				1	-119.7055296	34.4703319
73	coast live oak	40	20	20	Minor Damage	1						1		-119.7003219	34.47235547
74	coast live oak	32	18	40	Moderate Damage		1			1		1		-119.7003103	34.47240905

TREE ID No.	Species	DBH (in.)	Dripline (feet)	Estimated Height (Feet)	Impact Severity	Impact Type				Remedial Measure				Location	
						Undetermined Source	Mechanical Damage	Rocks and Boulders Damage	Soil Impacts	Leave as Snag	Prune	Trim/Cover Roots	Remove Rock/Soil	Lat	Long
75	coast live oak	30	8	25	Moderate Damage		1		1		1		1	-119.7017593	34.4718434
76	coast live oak	19	9	35	Minor Damage				1				1	-119.7017107	34.47181494
77	coast live oak	16	10	25	Minor Damage				1		1		1	-119.7019252	34.47135765
78	coast live oak	36	12	35	Minor Damage			1	1				1	-119.7019141	34.47135261
79	coast live oak	15	20	30	Minor Damage			1	1				1	-119.7041005	34.47087339
80	coast live oak	22	18	30	Minor Damage			1					1	-119.704109	34.47088664
81	coast live oak	70	20	25	Minor Damage	1						1		-119.6999432	34.47222604
82	coast live oak	34	10	25	Minor Damage	1						1		-119.6999045	34.47219692
83	coast live oak	15	6	30	Minor Damage			1	1				1	-119.7001016	34.47214061
84	coast live oak	15	5	12	Minor Damage				1				1	-119.7000262	34.47210854
85	coast live oak	23	8	30	Minor Damage				1				1	-119.7000391	34.47210398
86	coast live oak	14	9	35	Minor Damage				1				1	-119.7000656	34.47207003
87	coast live oak	43	15	30	Minor Damage		1		1		1		1	-119.699971	34.47210503
88	coast live oak	40	18	35	Moderate Damage		1		1		1		1	-119.6999316	34.47208573
89	coast live oak	23	15	40	Minor Damage				1				1	-119.6998962	34.47203029
90	coast live oak	24	9	12	Minor Damage				1				1	-119.6998018	34.47214543
91	coast live oak	17	4	12	Minor Damage				1				1	-119.6997798	34.47217062
92	coast live oak	32	20	40	Minor Damage				1				1	-119.6997554	34.47221048
93	coast live oak	18	45	45	Minor Damage		1		1				1	-119.6997448	34.47217957
94	coast live oak	19	25	35	Minor Damage		1		1		1		1	-119.6996893	34.47223494
95	coast live oak	48	25	35	Minor Damage				1				1	-119.6996239	34.4722626
98	western sycamore	25	15	35	Minor Damage			1	1				1	-119.6994046	34.47238138
99	coast live oak	36	10	35	Minor Damage				1				1	-119.6986937	34.47183174
100	coast live oak	4	3	12	Minor Damage			1	1				1	-119.6986792	34.47186488
101	bay laurel	4	3	15	Major Damage	1		1	1	1				-119.6986471	34.47175679
102	bay laurel	4	2	15	Minor Damage		1	1	1		1		1	-119.6986082	34.47174883
103	coast live oak	13	6	20	Minor Damage				1				1	-119.698428	34.47177407
104	coast live oak	5	5	20	Minor Damage		1							-119.707221	34.47099434
105	coast live oak	20	10	30	Minor Damage				1				1	-119.7072692	34.4710884
106	coast live oak	16	9	40	Minor Damage		1							-119.707349	34.47118776
107	coast live oak	16	5	20	Moderate Damage		1							-119.7073022	34.47179254
108	coast live oak	28	10	35	Minor Damage		1				1			-119.70731	34.47145168
109	coast live oak	19	9	20	Minor Damage		1		1		1		1	-119.7072786	34.47215709
110	coast live oak	15	4	12	Moderate Damage	1	1				1			-119.707098	34.47226517
111	coast live oak	15	8	20	Minor Damage				1				1	-119.7070113	34.47232367
112	coast live oak	9	3	18	Minor Damage				1				1	-119.7070419	34.47226604
113	coast live oak	20	10	20	Minor Damage				1				1	-119.7068052	34.47236742
114	coast live oak	22	15	20	Minor Damage				1				1	-119.7067456	34.47240204
115	coast live oak	24	10	20	Minor Damage				1				1	-119.7064497	34.47235091
116	coast live oak	14	10	40	Minor Damage			1	1				1	-119.7072599	34.47244244
117	coast live oak	6	9	8	Moderate Damage			1	1				1	-119.7072951	34.4725559
118	coast live oak	8	6	15	Minor Damage			1					1	-119.7072543	34.47257721
119	bay laurel	5	6	12	Major Damage			1					1	-119.7073386	34.47258522
120	coast live oak	20	20	45	Minor Damage			1	1				1	-119.7071633	34.47253942
121	coast live oak	31	25	45	Minor Damage			1						-119.7070989	34.47244917
122	coast live oak	6	4	10	Moderate Damage			1						-119.7070894	34.4724499
123	coast live oak	27	25	30	Minor Damage				1				1	-119.7071365	34.47244085
132	coast live oak	14	7	25	Minor Damage						1			-119.6962873	34.4691813
148	coast live oak	18	11	22	Minor Damage			1					1	-119.7064362	34.4724503
195	coast live oak	21	10	17	Minor Damage			1				1	1	-119.7059605	34.46971046

TREE ID No.	Species	DBH (in.)	Dripline (feet)	Estimated Height (Feet)	Impact Severity	Impact Type				Remedial Measure				Location	
						Undetermined Source	Mechanical Damage	Rocks and Boulders Damage	Soil Impacts	Leave as Snag	Prune	Trim/Cover Roots	Remove Rock/Soil	Lat	Long
197	coast live oak	17	10	18	Moderate Damage		1							-119.706142	34.46970927
216	coast live oak	0	7	12	Minor Damage			1				1		-119.7025945	34.47092741

Shaded grey cell indicates no remedial activity was performed.

Highlighted cell indicated tree was within CDFW Jurisdictional Areas (Road Area 1 and Road Area 2).

Attachment E2

CDFW Trees to be Remediated as
Part of the Creek HRMP

Attachment E.2 CDFW Trees to be Remediated as part of the Creek HRMP

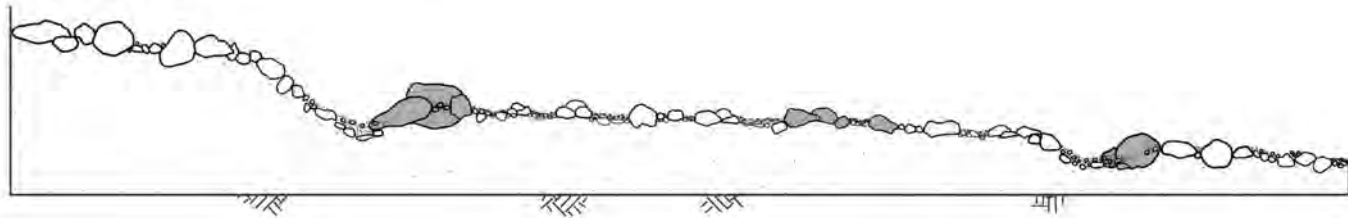
TREE ID No.	Species	DBH (in.)	Dripline (feet)	Estimated Height (Feet)	Impact Severity	Impact Type				Remedial Measure				Location	
						Undetermined Source	Mechanical Damage	Rocks and Boulders Damage	Soil Impacts	Leave as Snag	Prune	Trim/Cover Roots	Remove Rock/Soil	Lat	Long
22	coast live oak	7	2	9	Major Damage		1	1	1		1		1	-119.7070189	34.46923048
45	coast live oak	25	25	30	Minor Damage			1			1			-119.7067935	34.4690293
46	western sycamore	7	5	30	Moderate Damage			1			1		1	-119.7066905	34.46921129
47	western sycamore	6	6	15	Moderate Damage			1			1		1	-119.7066886	34.46924639
48	bay laurel	11	10	15	Moderate Damage			1	1			1	1	-119.7068102	34.46919841
49	bay laurel	14	10	18	Moderate Damage			1	1		1		1	-119.7067918	34.46922427
50	coast live oak	7	6	15	Minor Damage			1	1				1	-119.7068498	34.46922705
51	bay laurel	12	6	30	Moderate Damage			1	1				1	-119.7069534	34.46934557
52	bay laurel	12	10	30	Minor Damage			1	1				1	-119.7070079	34.46936709
53	bay laurel	10	9	12	Moderate Damage			1	1				1	-119.7069947	34.46936694
54	coast live oak	9	8	35	Minor Damage			1					1	-119.7070313	34.4694197
55	western sycamore	32	25	60	Minor Damage			1	1				1	-119.7069569	34.46942592
56	coast live oak	18	40	45	Minor Damage			1	1				1	-119.7069951	34.46950221
57	coast live oak	10	20	12	Minor Damage			1	1		1		1	-119.7073326	34.46969086
58	coast live oak	31	30	30	Minor Damage			1						-119.7074218	34.46968923
59	coast live oak	5	12	12	Moderate Damage			1					1	-119.7073195	34.46977849
60	coast live oak	6	9	25	Minor Damage			1	1				1	-119.7073847	34.46973694
61	bay laurel	4	8	15	Moderate Damage	1			1				1	-119.7073625	34.46972737
62	bay laurel	9	10	30	Minor Damage			1	1				1	-119.70737	34.46975718
63	bay laurel	8	6	40	Minor Damage			1	1				1	-119.7070959	34.46937488
64	coast live oak	12	20	40	Minor Damage		1		1				1	-119.7070458	34.46935737
65	coast live oak	11	0	0	Major Damage		1	1			1			-119.7070606	34.46934772
66	bay laurel	11	9	20	Minor Damage		1	1					1	-119.7070781	34.46932272
67	bay laurel	8	0	0	Major Damage		1		1				1	-119.7070715	34.46931239
96	western sycamore	6	0	0	Major Damage		1						1	-119.6995148	34.47235077
97	coast live oak	26	20	35	Moderate Damage		1	1	1		1		1	-119.6994367	34.47239895
228	western sycamore	0	8	24	Minor Damage			1	1				1	-119.7074029	34.46994337
229	western sycamore	17	20	30	Moderate Damage			1	1				1	-119.7073147	34.46992293
230	western sycamore	6	3	15	Moderate Damage			1	1				1	-119.7073774	34.46992615

Attachment F

Conceptual Creek Profiles and Cross-Sections

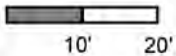
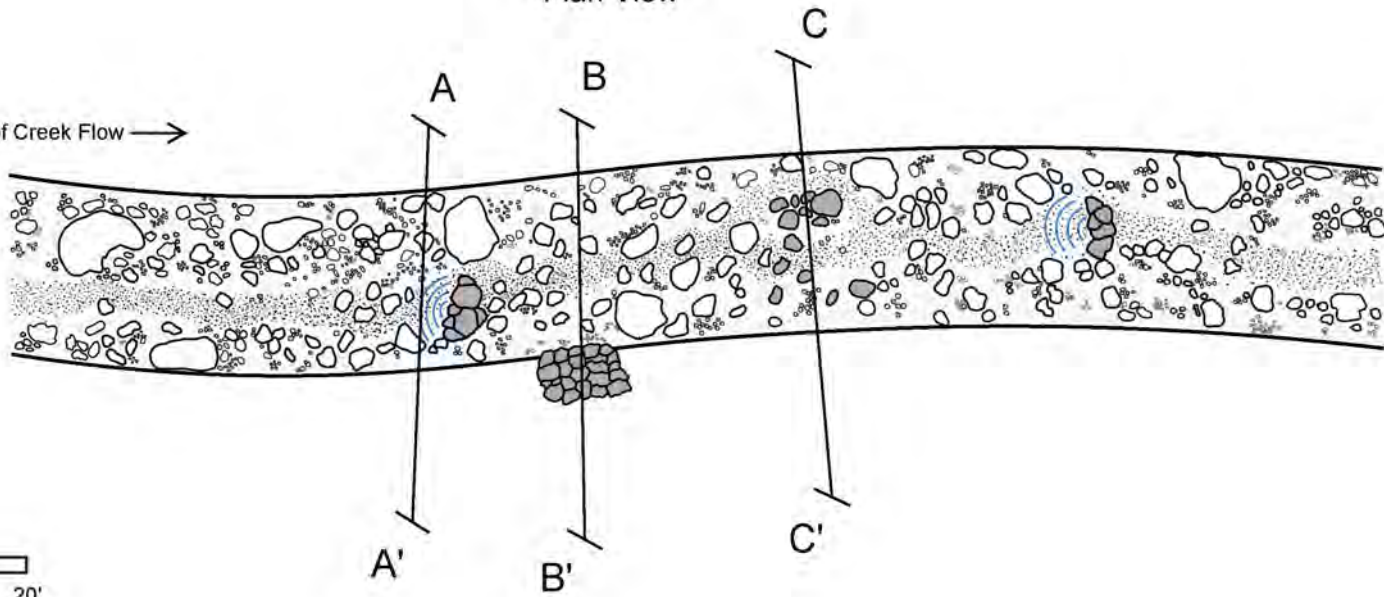
Longitudinal Profile

Direction of Creek Flow →

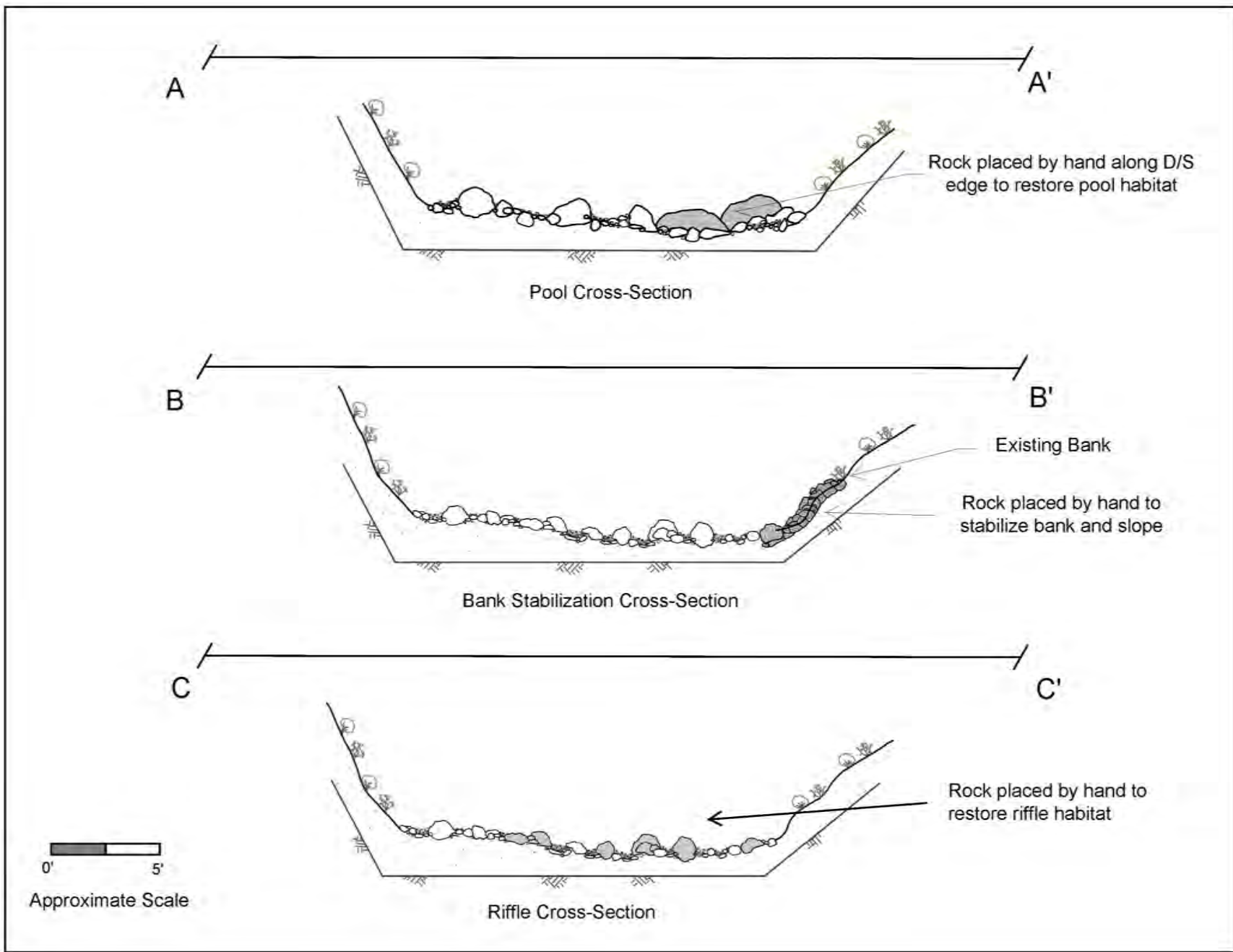


Plan View

Direction of Creek Flow →



Approximate Scale



Attachment G

Mission Creek Floral Compendium

Attachment G. Mission Creek Floral Compendium

Scientific Name	Common Name
ANGIOSPERMS (EUDICOTS)	
ADOXACEAE	MUSKROOT FAMILY
<i>Sambucus nigra</i> subsp. <i>caerulea</i>	blue elderberry
ANACARDIACEAE	SUMAC OR CASHEW FAMILY
<i>Toxicodendron diversilobum</i>	poison oak
ASTERACEAE	SUNFLOWER FAMILY
<i>Artemisia californica</i>	California sagebrush
<i>Artemisia douglasiana</i>	mugwort
<i>Cirsium occidentale</i> var. <i>californicum</i>	cobweb thistle
<i>Eriophyllum confertiflorum</i> var. <i>confertiflorum</i>	long-stem golden-yarrow
<i>Malacothrix saxatilis</i>	cliff malacothrix
<i>Pseudognaphalium californicum</i>	California everlasting
<i>Pseudognaphalium</i> sp.	cudweed
<i>Uropappus lindleyi</i>	silver puff
<i>Venegasia carpesioides</i>	canyon-sunflower
BORAGINACEAE	BORAGE FAMILY
<i>Eriodictyon crassifolium</i>	thick-leaved yerba santa
<i>Eucrypta chrysanthemifolia</i> var. <i>chrysanthemifolia</i>	common eucrypta
<i>Phacelia cicutaria</i>	caterpillar phacelia
<i>Phacelia</i> sp.	phacelia
<i>Phacelia viscida</i> var. <i>albiflora</i>	sticky phacelia
<i>Pholistoma auritum</i> var. <i>auritum</i>	fiesta flower
CAPRIFOLIACEAE	HONEYSUCKLE FAMILY
<i>Symphoricarpos mollis</i>	creeping snowberry
CUCURBITACEAE	GOURD FAMILY
<i>Marah macrocarpa</i>	wild cucumber
FABACEAE	LEGUME FAMILY
<i>Lupinus bicolor</i>	miniature lupine
LAMIACEAE	MINT FAMILY
<i>Salvia spathacea</i>	hummingbird sage
<i>Stachys bullata</i>	California hedge-nettle
MONTIACEAE	MINER'S LETTUCE FAMILY
<i>Claytonia perfoliata</i>	Miner's lettuce
ONAGRACEAE	EVENING PRIMROSE FAMILY
<i>Eulobus californicus</i>	California evening primrose
OROBANCHACEAE	BROOM-RAPE FAMILY
<i>Castilleja foliolosa</i>	woolly Indian paintbrush

Attachment G. Mission Creek Floral Compendium

PHRYMACEAE	LOPSEED FAMILY
<i>Diplacus aurantiacus</i>	sticky monkeyflower
<i>Diplacus longiflorus</i>	bush monkeyflower
PLANTAGINACEAE	PLANTAIN FAMILY
<i>Keckiella cordifolia</i>	heart leaved keckiella
RUBIACEAE	MADDER FAMILY
<i>Galium angustifolium</i>	narrow-leaved bedstraw
<i>Galium porrigens</i> var. <i>porrigens</i>	climbing/oval-leaf bedstraw
SCROPHULARIACEAE	FIGWORT FAMILY
<i>Scrophularia californica</i>	California figwort
SOLANACEAE	NIGHTSHADE FAMILY
<i>Solanum douglasii</i>	Douglas' nightshade
<i>Solanum xanti</i>	chaparral nightshade
STYRACACEAE	STORAX FAMILY
<i>Styrax redivivus</i>	snowdrop bush
ANGIOSPERMS (MONOCOTS)	
POACEAE	GRASS FAMILY
<i>Elymus condensatus</i>	giant wild rye
<i>Melica imperfecta</i>	coast range melic
THEMIDACEAE	BRODIAEA FAMILY
<i>Dichelostemma capitatum</i>	blue dicks