



SANTA BARBARA COUNTY

Resource Recovery &

Waste Management Division

Innovative Environmental Solutions

Your Trash Bill & the ReSource Center

What we are getting for paying more

Why have rates been going up?

- New facility that...
 - Addresses State mandates/laws
 - Reduces the environmental impact of our waste
 - Redefines waste recovery

Rate Changes (in your trash bill)

Residential Service	2020-2021	2021-2022	% Change
Basic Service	\$ 58.68	\$ 59.98	2.21%
Standard Service	\$ 52.90	\$ 54.06	2.19%
Minimum Service	\$ 47.07	\$ 48.12	2.21%
Single Service	\$ 41.28	\$ 42.10	2.00%

Rate Changes (in your trash bill)

Residential Service (continued)	2020-2021	2021-2022	% Change
Additional Trash Container	\$ 13.26	\$ 13.67	3.06%
Additional Greenwaste Container	\$ 5.85	\$ 6.03	3.12%
Additional Recycling Container	No Charge		
Increase range			2.47%-3.12%

Rate Changes (in your trash bill)

Residential Miscellaneous			
Extra Bag Tag	\$ 3.88	\$ 3.92	1.00%
Distance per 100 feet Trash/Greenwaste	\$ 8.00	\$ 8.08	1.00%
Distance per 100 feet Recycling	\$ 4.00	\$ 4.04	1.00%
Backyard Recycling Collection	\$ 10.28	\$ 10.38	1.00%
Greenwaste Only	\$ 12.30	\$ 12.42	1.00%
Recycling Only	\$ 9.12	\$ 9.21	1.00%
Returned Check	\$ 18.22	\$ 18.40	1.00%
Container exchange in excess of once per year	\$ 12.53	\$ 12.66	1.00%
Reactivation Residential	\$ 12.14	\$ 12.26	1.00%



REDEFINING WASTE RECOVERY

Redefining Waste Recovery

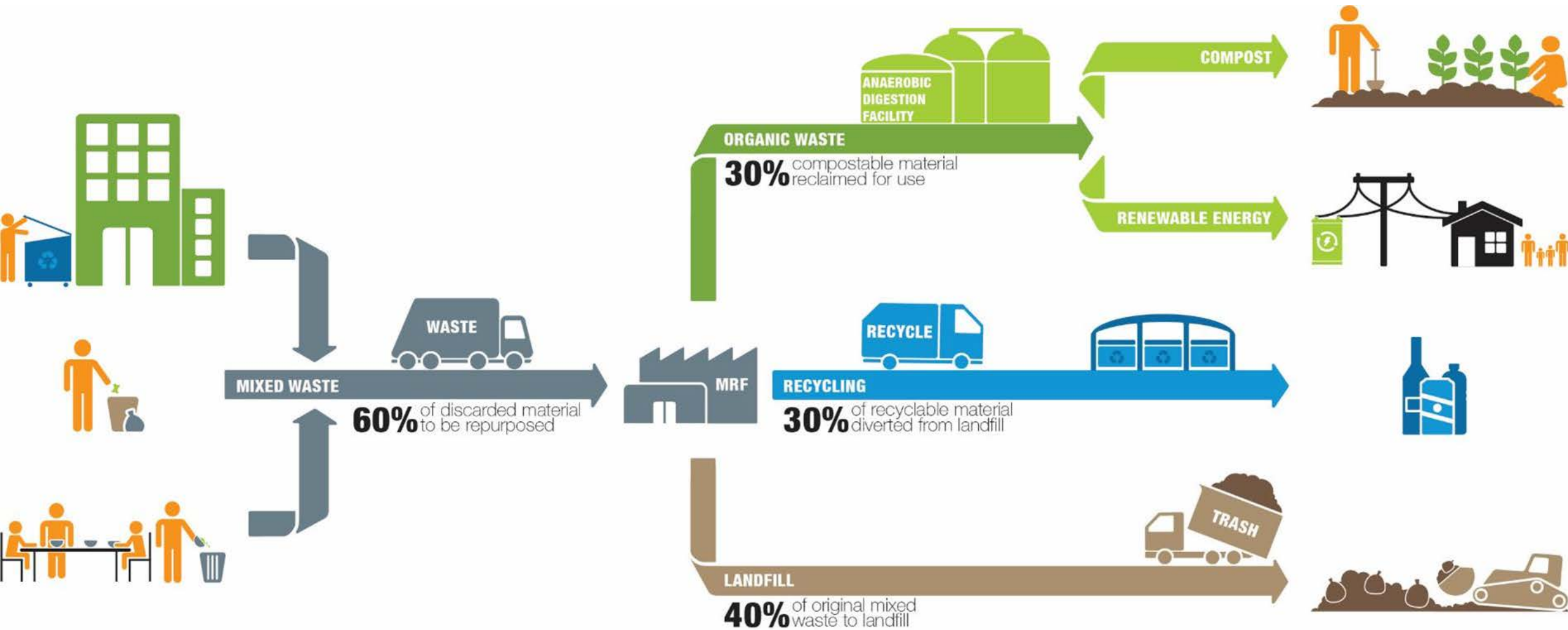
- Through collaboration with other cities and groups
- Strong Local Leadership
 - from County Supervisors and City Councilmembers
- Extensive Outreach
 - over 150 public presentations



Redefining Waste Recovery

State of the Art Facilities to Better Manage:

- Trash
- Recyclables
- Organics



ReSource Center Facilities

- Material recovery facility
 - Sort out recyclables & organics from mixed waste
 - Process source separated recyclables



ReSource Center Facilities

- Anaerobic Digestion Facility
 - Process organics from mixed waste
 - Process source separated organics



ReSource Center Facilities

- Composting area
 - Maturation of digestate (what comes out of the AD digesters) into compost
 - Screening for end market



IT'S HAPPENING!!!







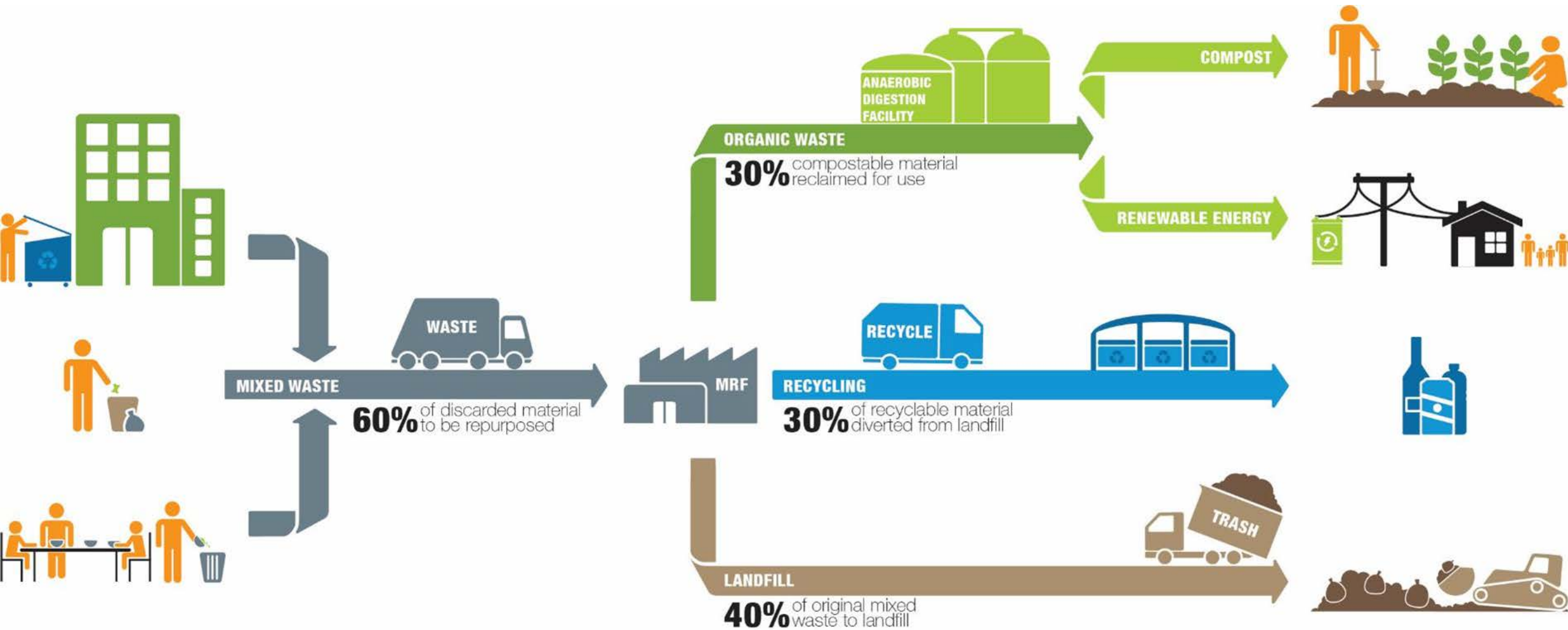












ReSource Center & Our Community

- Maintains local control
 - No commercial composting in southern portion of County
 - South Coast organics shipped to Kern County or Santa Maria
 - Able to utilize local markets with lower carbon footprint

ReSource Center & Our Community

- Increases flexibility
 - County/Local Public Ownership means that this facility can more easily change to suit the needs of the community
 - The public has more input rather than private interests

ReSource Center & Our Community

- Meets & Exceeds New State Standards
 - Organic waste diversion requirements
 - Reduction in GHGs
 - Higher diversion requirements
 - Increase in green energy generation

ReSource Center & Our Community

- Keeps Resources LOCAL
 - Green energy for local residents & businesses
 - Compost for our community's homes, ranches, farms, parks, and businesses
 - Similar to County's mulch program
 - Moving our community to Net Zero

ReSource Center & Our Planet

- Air impacts
- Green energy
- Increases diversion to 85%+
- Modeling the way

Community Participation

- **Help us plan, get involved, and/or learn more**
 - www.LessIsMore.org
 - Visit our facilities –
 - The ReSource Center is a public facility
 - Tours this summer



Thank you!



SANTA BARBARA COUNTY

Innovative Environmental Solutions

www.LessIsMore.org/ReSourceCenter

Anaerobic Digestion

- Recognized (and recommended) composting method
- Enclosed and controlled composting facility
 - Regional APCDs prefer due to air emission concerns



Anaerobic Digestion

- Best technology in our area due to:
 - Fewer odors
 - Less water use
 - Less space requirement
- Added benefit of being a net renewable energy producer

