



Welcome

Annual Meeting

May 7, 2024



- The objective of this association shall be to preserve, maintain and improve Mission Canyon as a primarily residential area of beauty and charm.

MEETING AGENDA

**6:00-6:15 -- WELCOME, INTRODUCTIONS, &
ELECTION OF BOARD MEMBERS**

6:15-7:30 -- GUEST SPEAKERS

- ❖ **Supervisor Das Williams, SB County Update**
- ❖ **Dana Link-Herrera, Wildfire Resilience Planner, Dudek, Community Wildfire Protection Plan & Transportation Study**
- ❖ **Jessie Tobin, Community Chipping and Grazing Program Project Manager, Santa Barbara County Fire Safe Council**
- ❖ **Brian Trautwein, Senior Analyst / Watershed Program Director, Environmental Defense Center | Mission Canyon Watershed Health & Fire Safety Recommendations**

▶ **Question period following each presentation**



Please Welcome

- Office of Congressperson Salud Carbajal – Erika Reyes, District Director
- 1st District County Supervisor Das Williams & District Representative Kadie McShirley
- SB City Councilmember Kristen Sneddon
- SB County Fire Marshall Fred Tan
- SB County Fire Dept, Station 15 - Captain Deeson



Know Your MCA Board Members

- Gustavo Agredano
- Hutch Axilrod
- Selden Edner
- Alex Feldwinn
- Darby Feldwinn
- Jason Jewell
- Jason Saltoun-Ebin
- Kevin Snow
- Hugh Twibell
- Nancy Weiss



APPRECIATION TO OUR EXITING BOARD MEMBERS

Thank you,
Jean Yamamura & Erika Sharghi!



ELECTION OF BOARD MEMBERS

- For re-election:
 - Jason Saltoun-Ebin
 - Nancy Weiss
 - For election:
 - Gustavo Agredano
 - Hutch Axilrod
 - Jason Jewell
- Other nominations? (if the person has agreed to serve)

EXCEPTIONAL LEADERSHIP AWARD

Dr. Ray Smith

- Tireless & effective Mission Canyon advocate for 20+ years
- MCA Board President (2006 - 2013)
- Helped develop the first Community Wildfire Protection Plan (2011), MC Community Plan (2014), & MC Design Guidelines (2014)
- MCA Representative, Fire Safe Council (2008 – present)
- Led many other fire prevention efforts: annual brush chipping, home hardening, evacuation routes, cameras to track wildfires, grants for funding, Tunnel Trail parking improvements, & many more!



Coast Live Oak

Quercus agrifolia

Oak Family (Fagaceae)

In honor of Ray & Domi Smith,
for your decades of generous service
to our beloved Mission Canyon





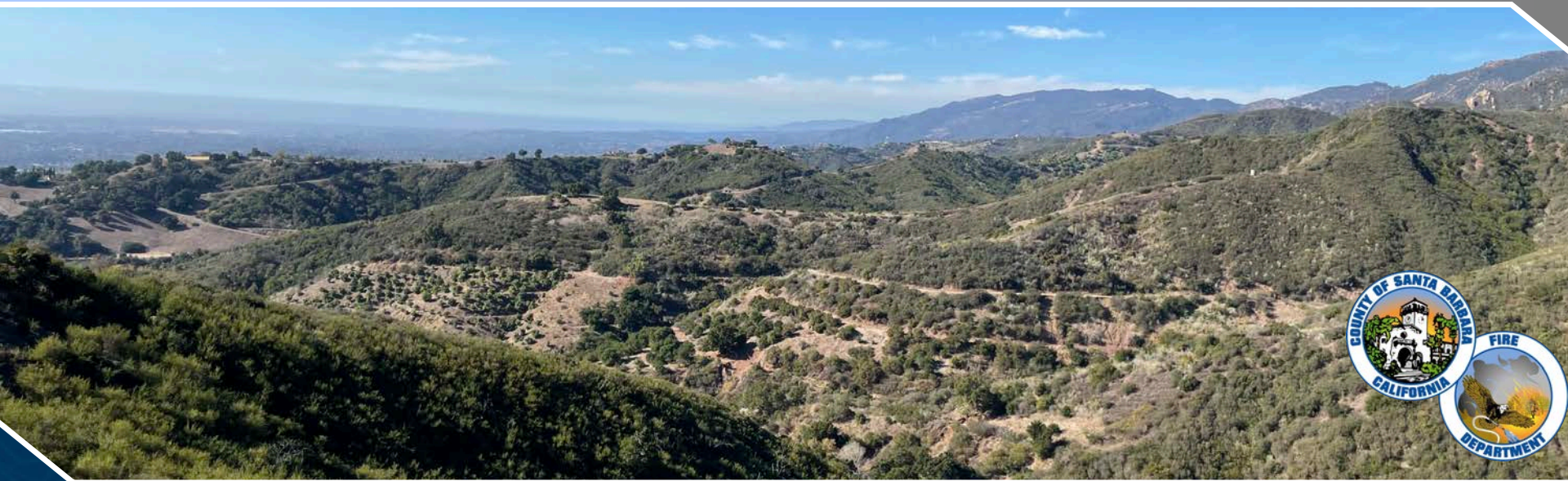
PLEASE WELCOME:
Das Williams,
1st District County Supervisor



PLEASE WELCOME:

Dana Link-Herrera
Wildfire Resilience Planner, Dudek,
Community Wildfire Protection Plan &
Transportation Study

DUDEK



Santa Barbara Foothill Communities CWPP & Transportation Study

Mission Canyon Association Annual Meeting

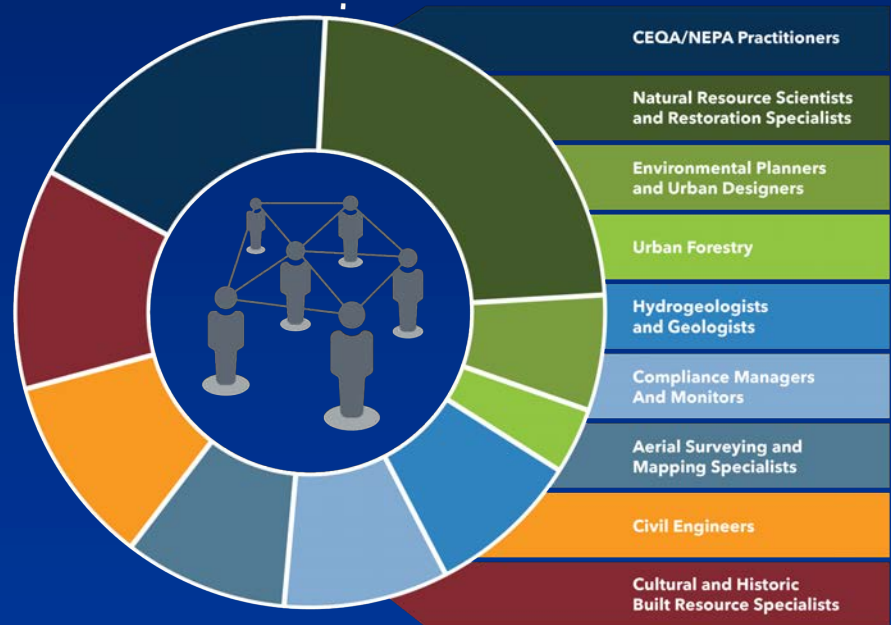
PRESENTATION BY DUDEK

MAY 07, 2024

Dudek - Introduction

- Established 1980
- Environmental & Engineering Consulting Firm
- Forestry and Fire Planning Group
- CEQA Group
- Supporting Technical Experts

WHO WE ARE



What is a CWPP?

- A plan that is developed collaboratively
- Evaluates wildfire hazard and wildfire risk in the plan area
- Engages the community to identify main issues/concerns
- Identifies and prioritizes areas for hazardous fuel reduction treatments and recommends *Best Management Practices*
- Identifies and prioritizes measures to reduce wildfire risk and increase wildfire preparedness



What is a Transportation Study?

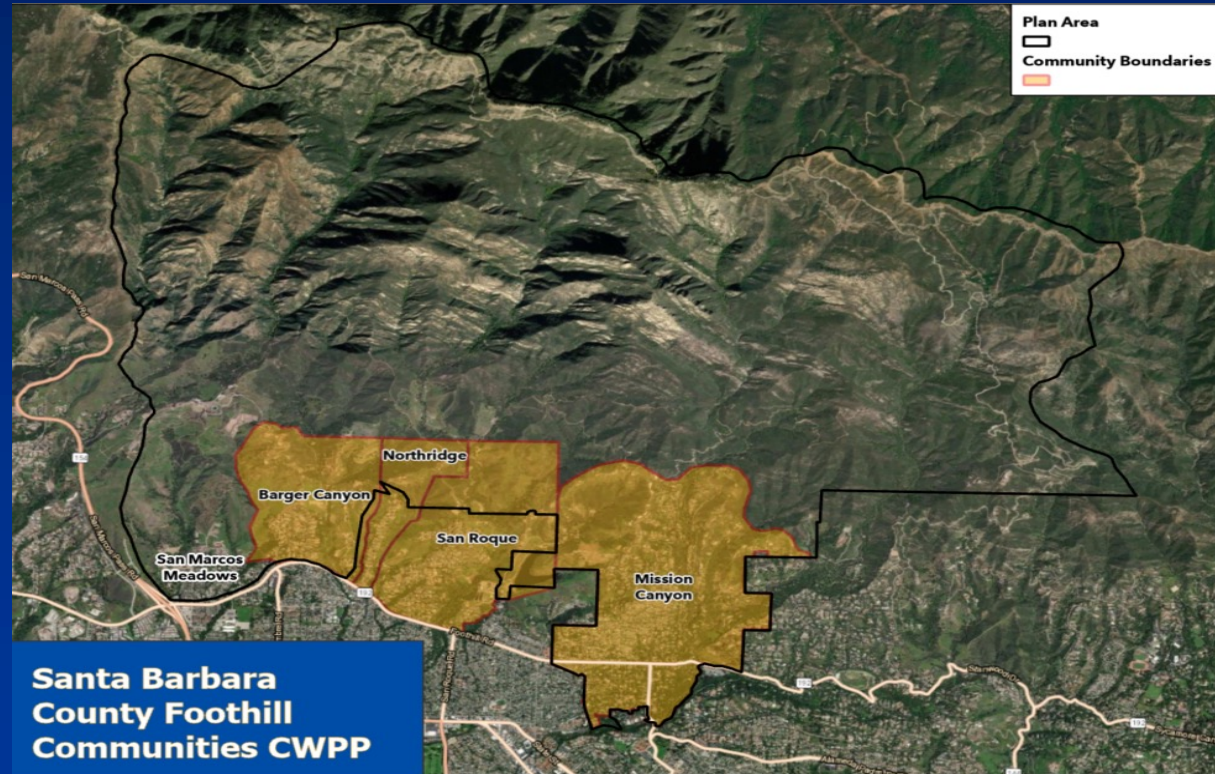
- Evaluates of access/egress routes and travel demand
- Identifies areas with limited access/egress and areas with sufficient access/egress
- Recommendations to improve emergency access and evacuation routes



Plan Area

10,696 Total Acres

- SRA = 7,219 acres
- LRA = 164 acres
- FRA = 3,313 acres

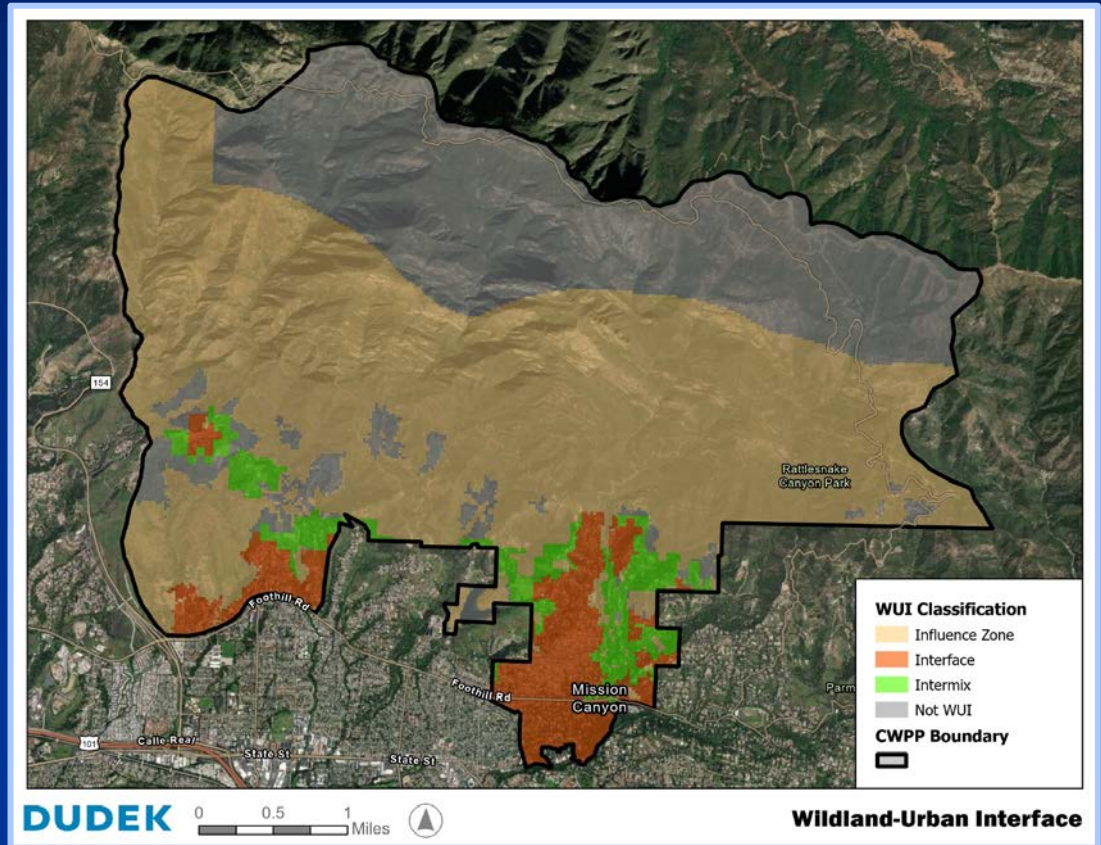


Wildland-Urban Interface

Interface = 750 acres

Intermix = 466 acres

Influence Zone = 6,094 acres



Get Involved: Community Workshops and Wildfire Survey!

The Santa Barbara County Fire Department is preparing a Community Wildfire Protection Plan (CWPP) and Transportation Study and we want to hear from you!



We are seeking input from community members and other interested parties.
Join us for in person community workshops in May 2024.

Santa Barbara Botanic Garden

BLAKSLEY LIBRARY

Tuesday May 14th, 2024

6:00pm - 7:30pm

1212 Mission Canyon Rd, Santa Barbara, CA 93105

Santa Barbara County Fire Department Headquarters

Wednesday May 22nd, 2024

6:00pm - 7:30pm

4410 Cathedral Oaks Rd, Santa Barbara, CA 93110

REGISTER FOR THE WORKSHOPS AND TAKE OUR SURVEY

<https://ims.dudek.com/sbfoothillscwpp>




Get involved: Take our Survey!

Public Survey

**Public Survey for the Santa Barbara Foothills
Community Wildfire Protection Plan (CWPP) and
Transportation Study**

Thank you for taking the time to complete this survey. A Community Wildfire Protection Plan (CWPP) and Transportation Study is being prepared for the Santa Barbara Foothill Communities to identify opportunities for reducing wildfire risk in the Plan Area. As a component of CWPP development, we are seeking input from residents, landowners, and other interested parties about your concerns related to wildfire and how the plan can reflect the community's priorities for mitigating wildfire risk.



[Next](#)

Page 1 of 3

- The community survey will help us gain a broad understanding of...
 - community members' experience with wildfire
 - challenges and barriers to preparing for wildfire
 - ways the county can support community preparedness efforts
- The survey is offered in English **and** Spanish!
- The survey is open through May 2024

The Santa Barbara County Fire Department is preparing a Community Wildfire Protection Plan (CWPP) and Transportation Study for the Santa Barbara Foothill Communities.

We are seeking input from community members, agencies, environmental groups, and other interested parties to help ensure the CWPP reflects the priorities of the community.



VISIT **THE PROJECT STORY MAP**
AND **TAKE THE SURVEY TODAY!**

<https://ims.dudek.com/sbfoothillscwpp>





PLEASE WELCOME:

Jessie Tobin,
Community Chipping and Grazing
Program Project Manager,
Santa Barbara County Fire Safe Council



Free Community Chipper Event

How to prepare your neighborhood for fire season

Jessie Tobin Community Chipper and Grazing Program Project Manager

Wildfire Risk Reduction:

- Fire Prevention and Education
- Defensible Space
- Infrastructure Hardening
- Fuels Management/Landscape Resilience



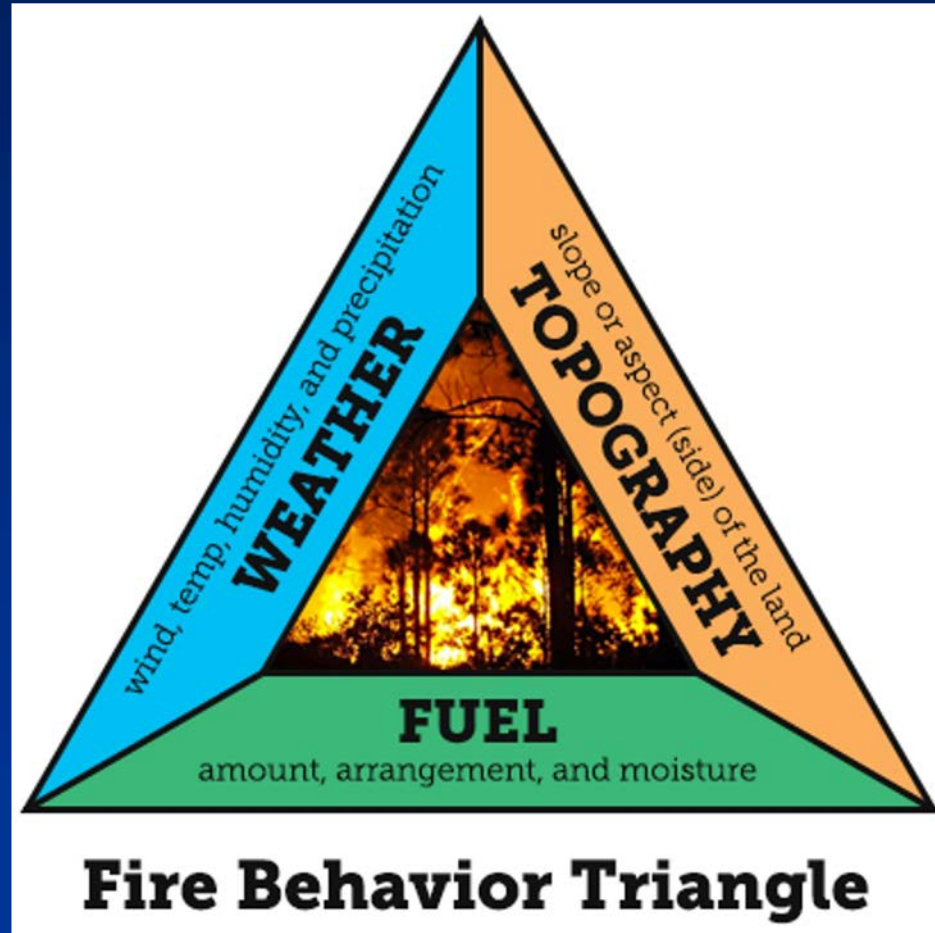


Funding for the project provided by the California Department of Forestry and Fire Protection's Fire Prevention Program as part of the California Climate Investments Program

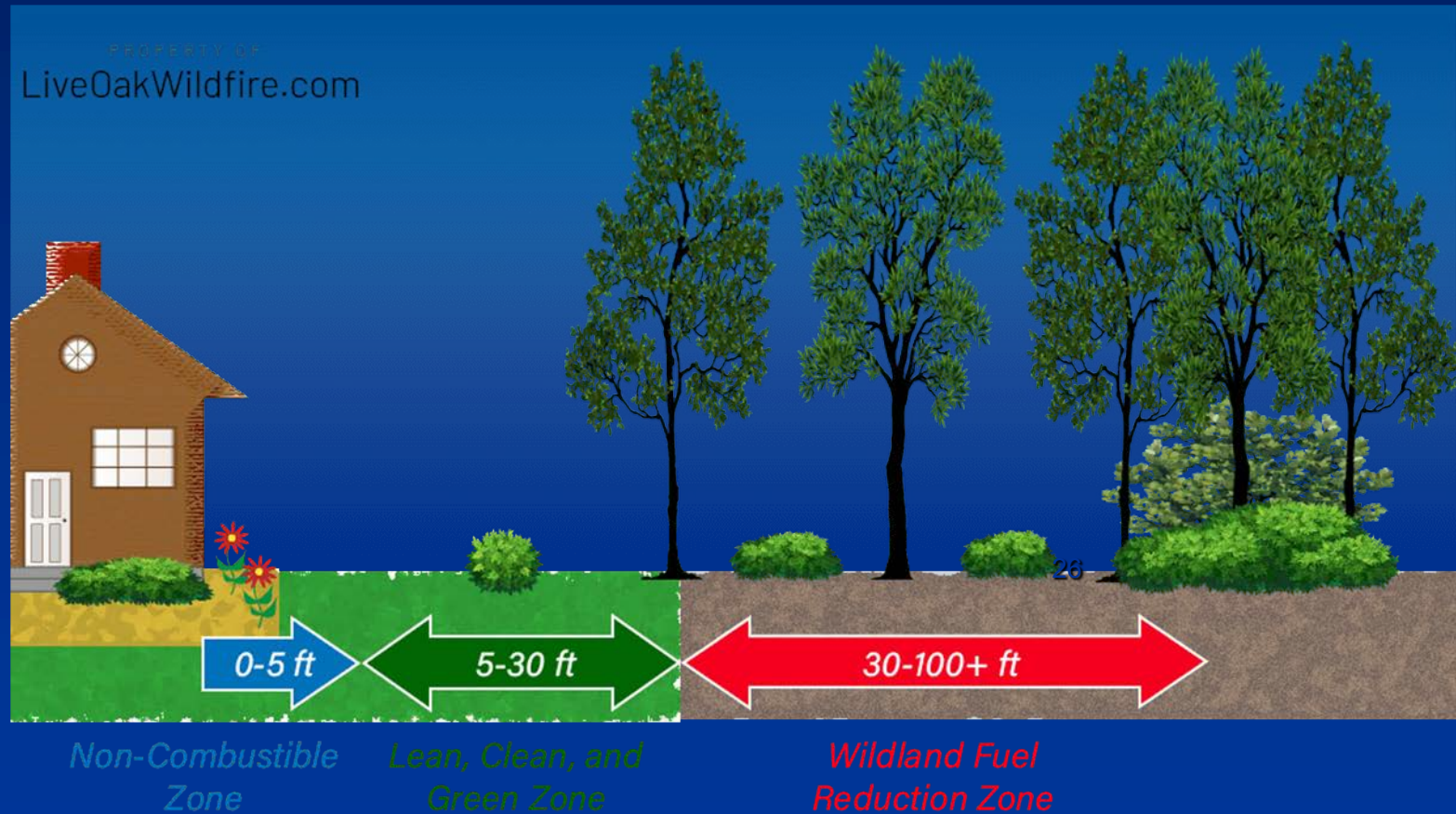
Fire Behavior

How a fire burns:

- Weather
- Topography (Terrain)
- Fuels (Vegetation)

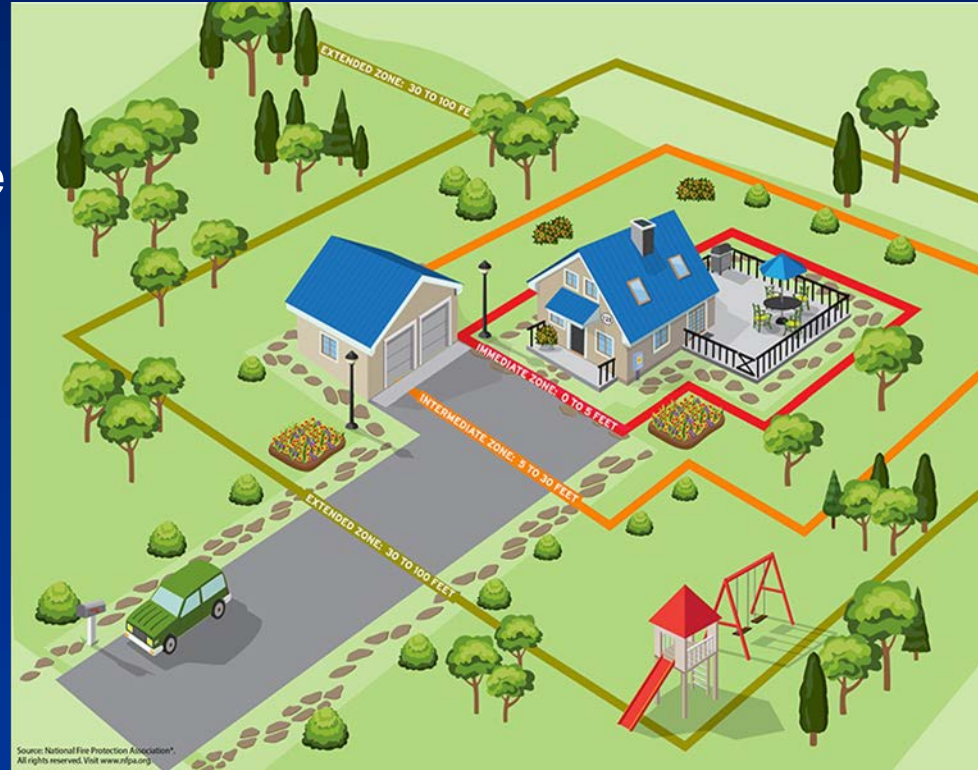


Defensible Space Zones



Defensible Space

- Zone 0: Ember Resistant Zone
- Zone 1: Lean, Clean, & Green zone
- Zone 2: Reduced Fuel Zone
- Zone 3: Access Zone (Driveway)



Noncombustible Zone 0 - 5'



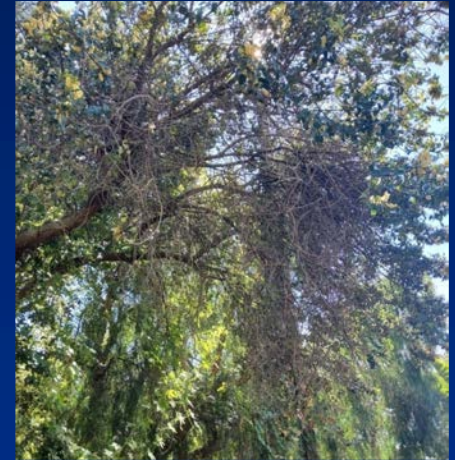
Zone 1 & 2



Remove ladder fuels



Trim up trees and shrubs 2ft or 1/3 of height



Remove dead branches



Remove dead trees and shrubs



Thin out vegetation



Cut dry grass to 2in



Zone 3: Access Zone



Additional Activity Improving Emergency Vehicle Access



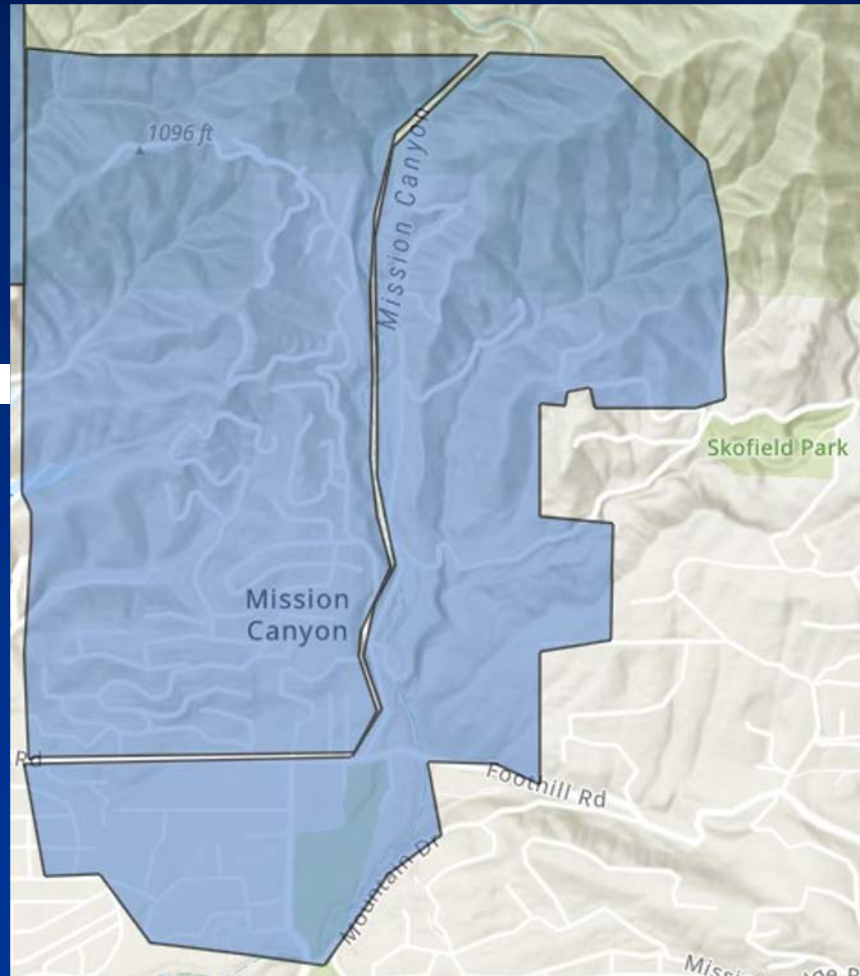
Tag and Trim





May 28th-Tunnel Road

**(Mission Canyon Heights and
neighborhoods North of
Foothill Rd)**



**June 3rd- Mission Canyon
Rd**

**(Mission Canyon Road and
neighborhoods South of
Foothill)**

How to Stack Your Cuttings to be Chipped

✓ Acceptable Pile ✗ Unacceptable Pile



Stacking

Vegetation must be longer than 3 feet, less than 16 inches in diameter, and stacked at the curb of your roadway with cut ends pointing toward the road to be chipped.

Vegetation must be stacked by 8 am on Monday May 28th or June 3rd to be addressed.

Residents on Tunnel, Mission Canyon, Las Canoas Roads and Narrow Private Roads:
Please stack along primary roadway turnouts/designated areas if your mailbox is not adjacent to your home.

When in doubt, stack it out!

We are unable to drive the chipper up:

- Memory Lane
- Spyglass Road
- Owl Ridge
- Orange Grove
- Steep narrow roadways



What Can't Be Chipped?

Leaves, succulents, pine needles, palm fronds, stumps, branches with thorns, vines, bamboo, root balls, grasses, and other small trimmings **CANNOT** be chipped. Please place in provided roll offs or in your own trash.

Roll Off placements will be listed on the sbfiresafecouncil.org/chipper page



PLEASE WELCOME:

Brian Trautwein, Senior Analyst /
Watershed Program Director,
Environmental Defense Center |
Mission Canyon Watershed Health &
Fire Safety Recommendations



environmental
DEFENSE CENTER

Legal protection for what really matters



MISSION CANYON WATERSHED HEALTH AND FIRE SAFETY RECOMMENDATIONS

**A Presentation for the
Mission Canyon Association
May 7, 2024**

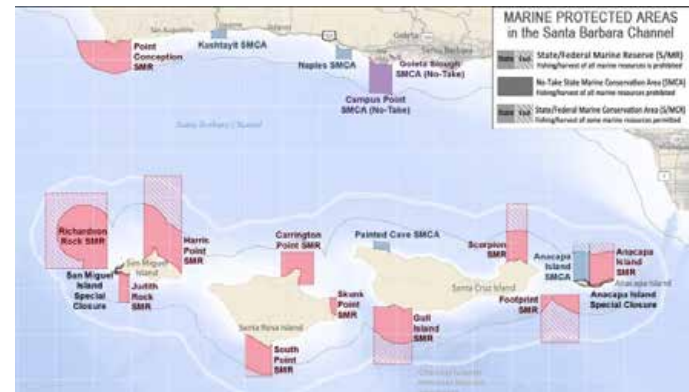
Chumash Land Acknowledgement

EDC works throughout the unceded lands of the Chumash peoples, from the Michumash on what we now call the Channel Islands, to the 'Amuwu to the north, and bands in between, as well as those that came before, all of whom have called this area home for time immemorial. We hold deep respect for Chumash elders past and present.

Clean Water



Santa Barbara Channel



Climate & Energy



Oil Trains Threatened Our Communities



Offshore Oil Platforms



Liquefied Natural Gas Terminals



Renewable Energy

Open Space & Wildlife



More Mesa



Naples



Endangered Steelhead Trout

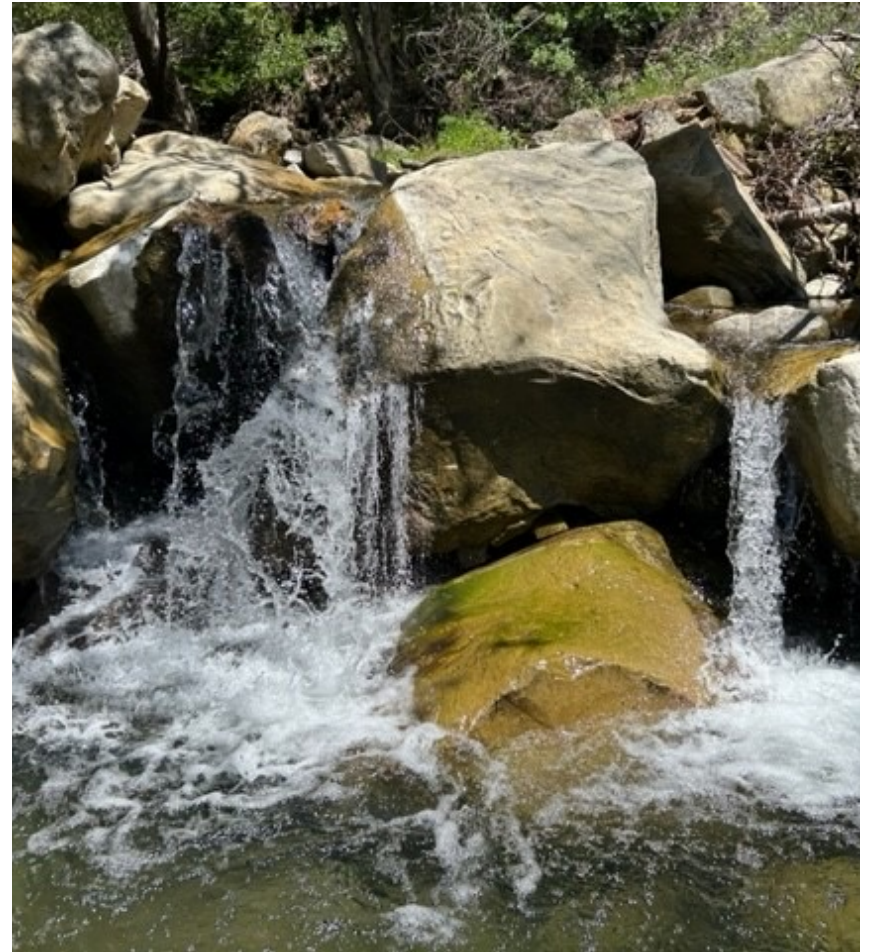


Preserving agricultural land

EDC Watershed Program

Brian Trautwein, Senior Analyst / Watershed Program Director

1. Creek Cleanups
2. Stream Surveys
3. Technical Reports
4. Watershed Alliance of South Coast Orgs



Rare Species in our Creeks



California newt



Two-striped garter snake



**So. California
steelhead**

Credit: Julia Thomson



**California red-legged
frog**



**Southwestern pond
turtle**

Southern California Steelhead







Effects of Water Diversions on Steelhead



2023 Creek Cleanup Program



| | |
|-----------------------|------------------|
| San Jose Creek | 1,653 LBS |
| Atascadero Cr. | 1,950 LBS |
| Glen Annie Cr. | 1,296 LBS |
| San Pedro Cr. | 1,912 LBS |
| Maria Ygnacio Cr. | 3,220 LBS |
| <u>Devereux Creek</u> | <u>3,502 LBS</u> |



Total: 13,394 LBS

Creek Cleanup Partners

City of Goleta

UCSB Coastal Fund

Clif Family Foundation

City of Santa Barbara Creeks

Restoration and Water Quality Division

Santa Barbara County Project Clean Water

UCSB Associated Students Coastal Fund

Santa Barbara Sunrise Movement

UCSB Engineers Without Borders

Santa Barbara Channelkeeper

Santa Barbara Foundation

Urban Creeks Council

UCSB Bren School

Cub Scout Pack 36

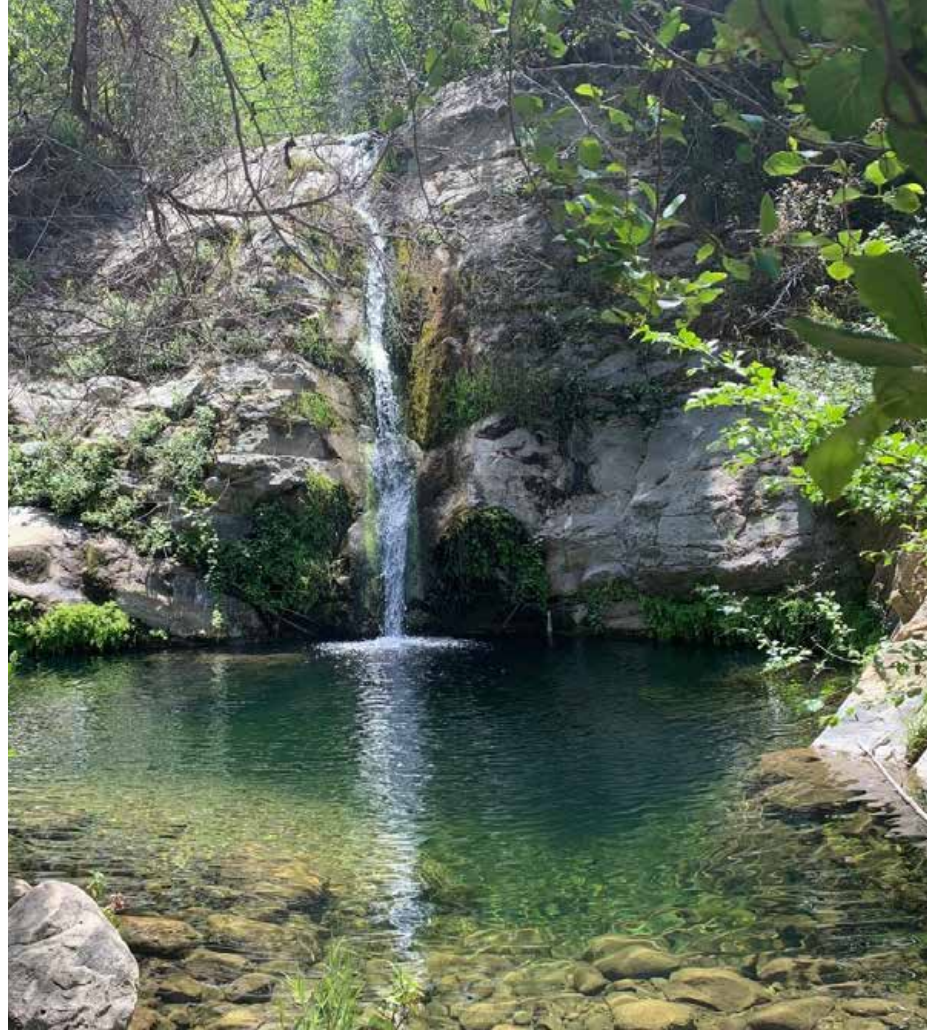
BSA Troop 4

Earthcomb



Creek Surveys

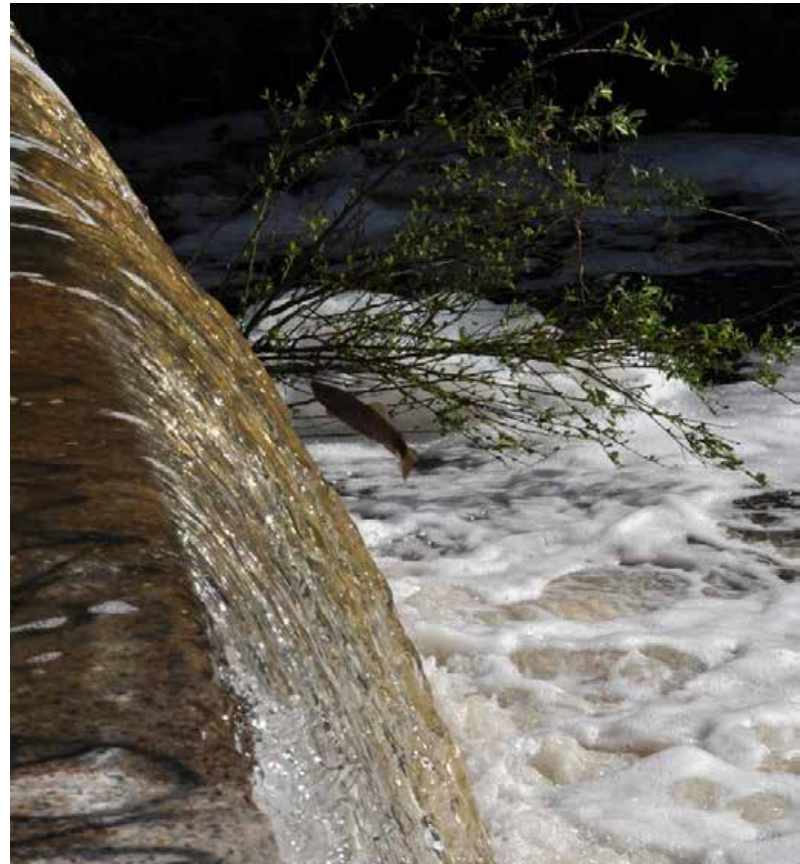
- Invasive plant species
- Creek diversions
- Riparian habitat clearing
- Dumping
- Illegal development
- Illicit discharges
- Nonnative wildlife



Watershed Alliance of South Coast Organizations

Explore Ecology
Urban Creeks Council
Santa Barbara Surfrider
Santa Barbara Audubon
Friends of Mission Canyon
Gaviota Coast Conservancy
Channel Islands Restoration
Mission Canyon Association
Citizens Planning Association
Santa Barbara Channelkeeper
Santa Barbara Botanic Garden
League of Women Voters of SB
Ygnacio family of Chumash Indians
Sierra Club Santa Barbara-Ventura Chapter
Museum of Natural History/Sea Center
Community Environmental Council
Goleta Coast Audubon Society
Coastal Ranches Conservancy
Wild Farm Lands Foundation
El Gato Channel Foundation
Los Padres ForestWatch
Illuminate Conservation
Bucket Brigade
CalTrout
EDC

**Shares information and takes action to
protect & restore watersheds**



Creek Water Diversion



Maria Ygnacio Creek Greywater Discharge



2020: Patterson
Ave at Cathedral
Oaks Rd

Sink & bathtub
hooked to storm
drain

Santa Barbara
County Notice of
Violation

Required to
connect drain to
septic system

Atascadero Creek Clearcut

- 800-foot-long creek bank cleared & road graded
- Trail fenced
- County and California Fish and Wildlife issued Violations
- Required to restore habitat & reopen public trail



Edison's Mission Creek Dumping



- 2020 near Tunnel Trail
- Blocked Mission Creek
- EDC reported to:
 - California Department of Fish and Wildlife
 - Army Corps of Engineers
 - Regional Water Board
 - Santa Barbara County
- 4 Violations issued
- Santa Barbara County DA: \$3 million fine

Goleta Creek and Watershed Management Plan

- Conceived by Creek Cleanup Volunteers
- Adopted by Goleta in 2020
- Identifies Resources and Impairments
- Sets Forth Policies, Strategies, and Actions



- Army Corps proposed 2-mile Mission Creek concrete channel

- Army Corps proposed 2-mile Mission Creek concrete channel



EDC Watershed Reports

- Goleta Watershed Health & Fire Safety (2021)
- County Flood Control Mitigation Program (2022)
- Success of Creek Restoration Projects (2023)
- **Mission Canyon Watershed Health & Fire Safety (2023)**



MISSION CANYON WATERSHED HEALTH AND FIRE SAFETY RECOMMENDATIONS



September 2023

Natalie Blackwelder, Watershed Program Intern

Brian Trautwein, Environmental Analyst / Watershed Program Coordinator

ENVIRONMENTAL DEFENSE CENTER

www.EnvironmentalDefenseCenter.org

Reducing Fire Hazards and Enhancing Watershed Health

- Mission Canyon Watershed: 28 Sites
- Rattlesnake Canyon Watershed: 3 Sites
- 5 General Recommendations



Figure 2. Steelhead spawning in Mission Creek. David Pritchett.

Key Findings

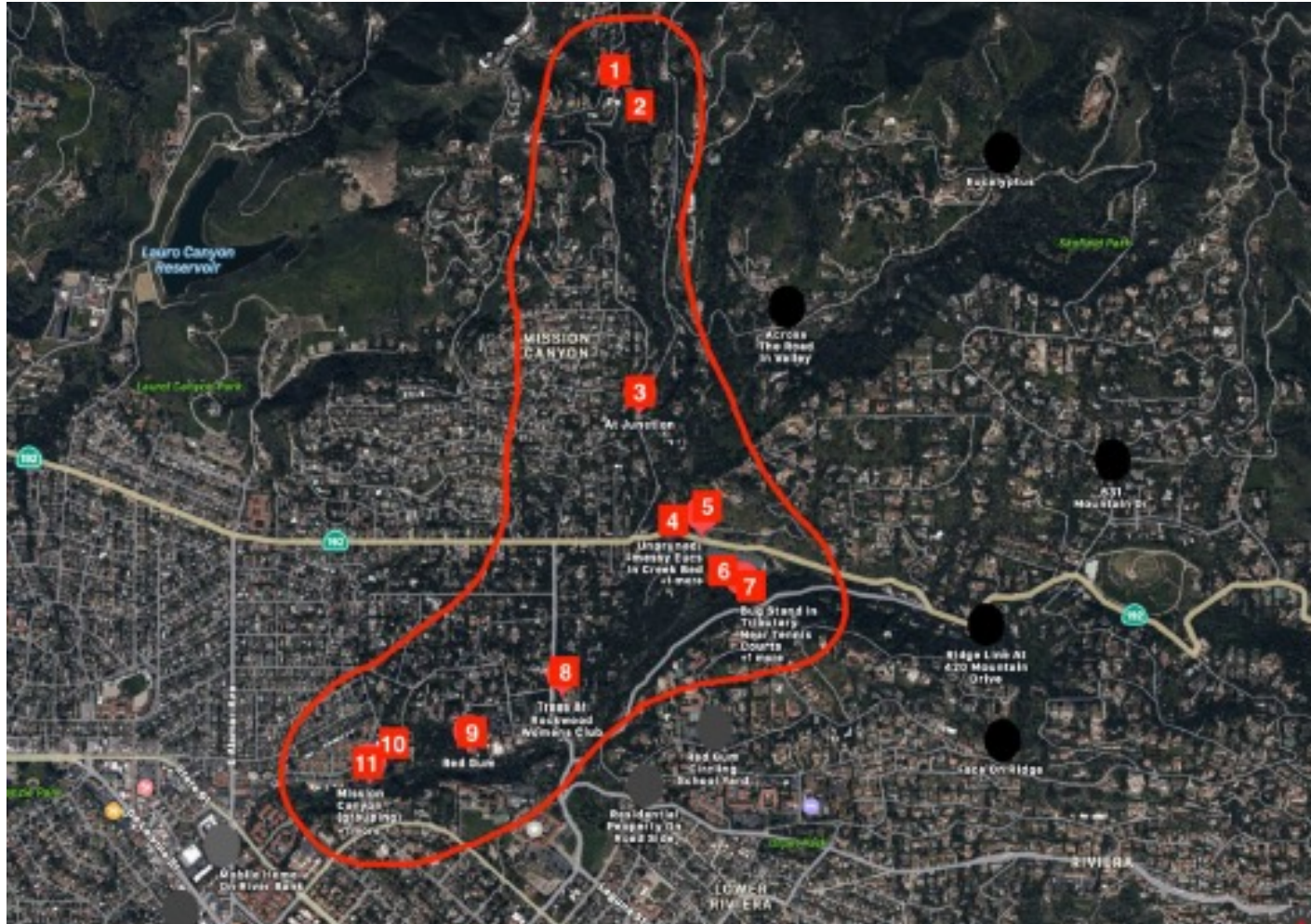
1. Climate change is increasing threats to the Mission Creek Watershed.
2. It is feasible to reduce fire, flood, and debris flow threats while improving watershed health by:
 - a. Replacing flammable invasive species with native plants.
 - b. Restoring natural hydrology of Mission and Rattlesnake Canyons.
 - c. Assisting people experiencing homelessness and camping near creeks.

Arroyo Hondo Creek



Natural Firebreak

Mission Canyon Sites



Invasive Eucalyptus are Spreading



Recommendation Mission Creek 3



Recommendation Mission Creek 7

- Phased removal of eucalyptus
- Chipping & Spreading Wood Chips
- Planting of native oak woodland species

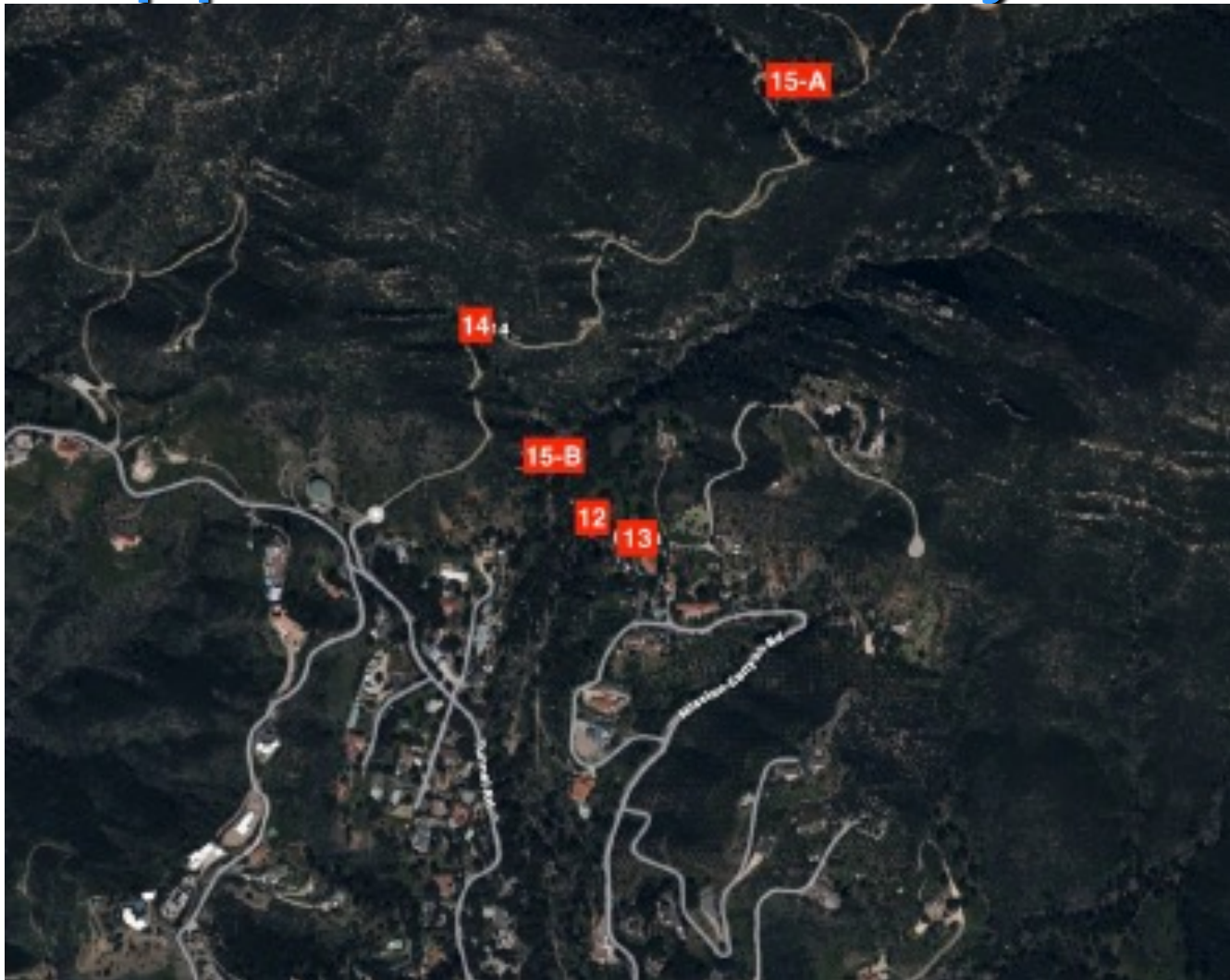


Recommendation Mission Creek 9



Near Museum of Natural History

Upper Mission Canyon



Edison Damage on Tunnel Trail



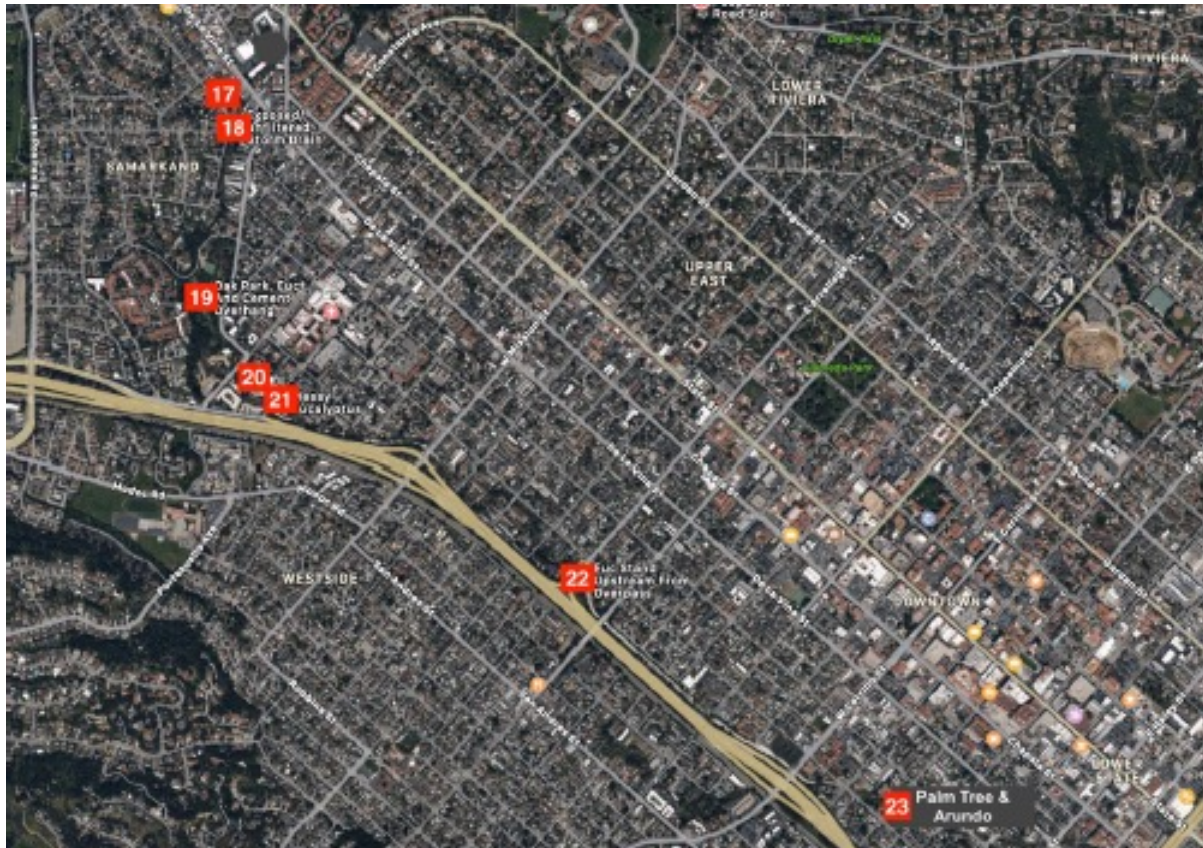
Dumped dirt, rocks, and debris into Mission Creek

Mission Tunnel



Dewatering Mission and Rattlesnake Creeks

Lower Mission Creek



Replace exotic vegetation with natives to reduce fire hazards and restore the creek.

Eucalyptus Trees & Arundo



Rattlesnake Canyon – Las Canoas

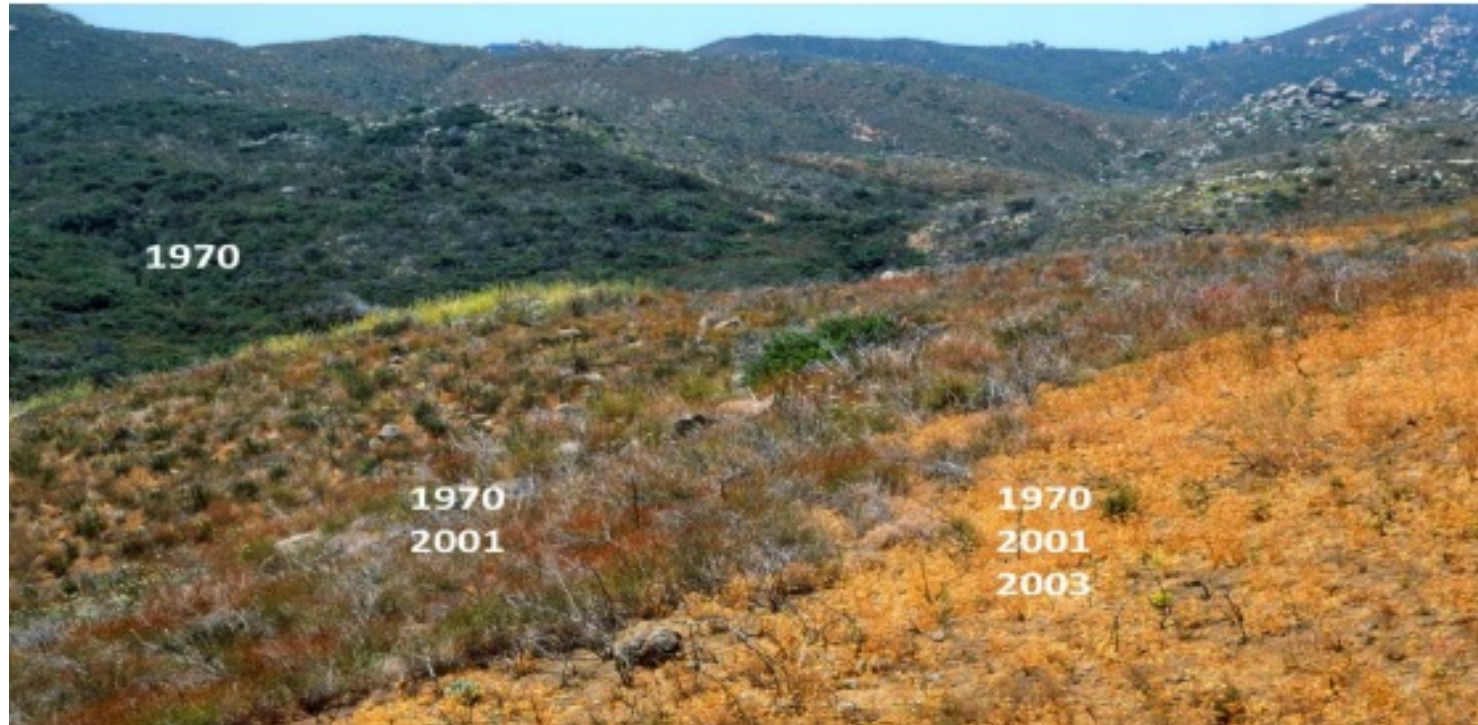


**Replace eucalyptus with native
sycamore and oak trees**

Global Recommendations

- Limit sale and planting of invasive nonnative flammable species through education or regulatory programs.
- Map, track, and replace flammable exotic plants with safer native species.
- Assist people experiencing homelessness living in creek-side camps and provide transition housing.
- Protect chaparral from type-conversion.
- Fund defensible space inspections.

Chaparral Type-conversion



California Chaparral Institute

Chaparral Mastication










Clearing chaparral far from communities may do little to protect homes and communities.

Rare Chaparral Species



- Late-flowered Mariposa lily
- Ringtail
- Santa Ynez Mountains Walking Stick

What Can You Do?

- Become a Member of EDC 
- Sign up for our e-newsletter 
- Stay Informed 
- Spread the Word 
- Attend our fun events! June 9 and July 12





Brian Trautwein

Senior Analyst/Watershed Program Director

BTrautwein@EnvironmentalDefenseCenter.org

906 Garden Street, Santa Barbara, CA, 93101
(805) 963-1622 ext. 108

www.EnvironmentalDefenseCenter.org



THANK YOU FOR
YOUR SUPPORT